

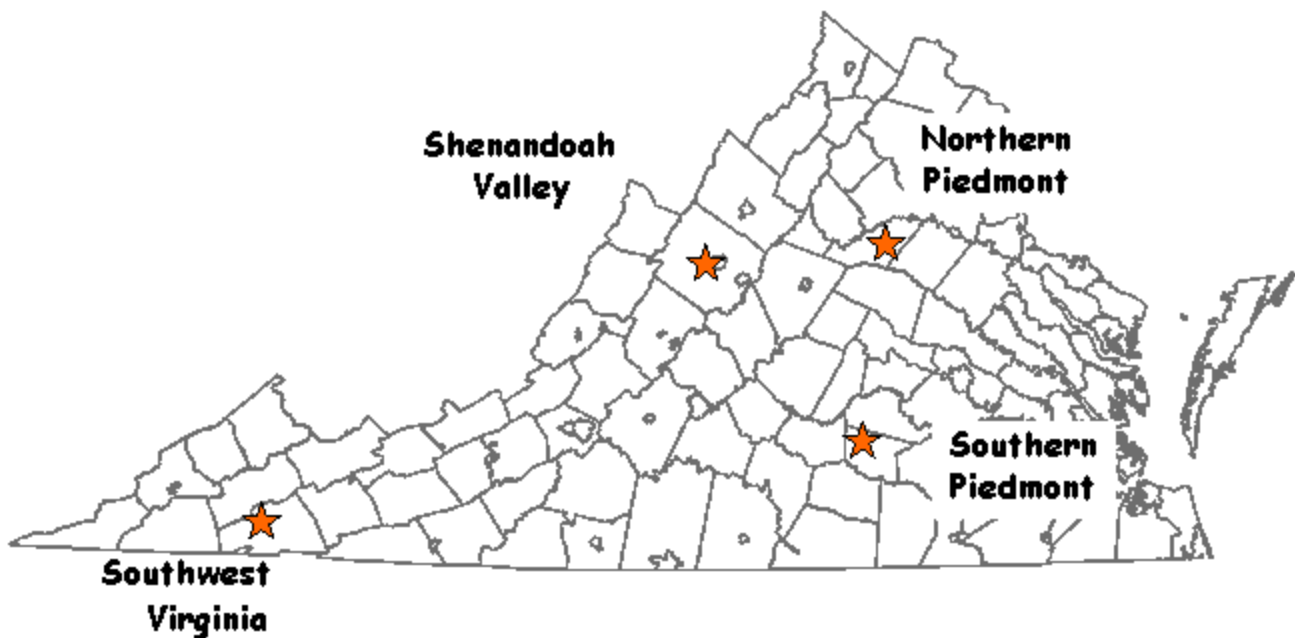


Virginia Cooperative Extension

Virginia Tech • Virginia State University

www.ext.vt.edu

Virginia Tech Corn Silage Testing 2013



THE 2013 VIRGINIA CORN SILAGE HYBRID TRIALS

Table of Contents	2
Companies participating in the 2013 Corn Silage Hybrid Trials.....	3
2013 Corn Silage Hybrid Trials Narrative	3
2013 Corn Silage Plot Information.....	6
Table 1. List of Hybrids in 2013 VA Tech Corn Silage Hybrid Test.....	7
Table 2. Bt Corn Insect Traits	9
Table 3. Multi-year, Multi-site Relative Ton per Acre (Yield)	11
Table 4. Multi-year, Multi-site Relative Milk per Ton (Quality)	14
Table 5. Multi-year, Multi-site Relative Milk per Acre (Yield x Quality)	17
Table 6. 2013 Corn Silage Test Results at the Shenandoah Valley Site.....	20
Table 7. Two Year Average Corn Silage Test Results (2012 and 2013) at the Shenandoah Valley Site.....	23
Table 8. Three Year Average Corn Silage Test Results (2011, 2012 and 2013) at the Shenandoah Valley Site	24
Table 9. 2013 Corn Silage Test Results at the Northern Piedmont Site	25
Table 10. Two Year Average Corn Silage Test Results (2012 and 2013) at the Northern Piedmont Site	27
Table 11. Three Year Average Corn Silage Test Results (2011, 2012 and 2013) at the Northern Piedmont Site	28
Table 12. 2013 Corn Silage Test Results at the Southern Piedmont Site	29
Table 13. Two Year Average Corn Silage Test Results (2012 and 2013) at the Southern Piedmont Site	31
Table 14. Three Year Average Corn Silage Test Results (2011, 2012 and 2013) at the Southern Piedmont Site	32
Table 15. 2013 Corn Silage Test Results at the Southwest/Mountain Site	33
Table 16. Two Year Average Corn Silage Test Results (2012 and 2013) at the Southwest/Mountain Site.....	35
Table 17. Three Year Average Corn Silage Test Results (2011, 2012 and 2013) at the Southwest/Mountain Site.....	36
Figure 1. Average Relative Yield versus Quality across Sites, 2013	37
Figure 2. High Yielding and High Quality Hybrids in at Least 3 Site/Year Combinations in 2013	38

THE 2013 VIRGINIA CORN SILAGE HYBRID TRIALS

Coordinated by H. Behl, E. Hokanson, and W. Thomason
Department of Crop and Soil Environmental Sciences
Virginia Tech, Blacksburg, VA
Other contributors: David Yutzky; Matt Yancey; Steve Gulick;
Chris Teutsch; Ned Jones; Phil Blevins; Johnny Robinson.

COMPANIES PARTICIPATING IN THE 2013 CORN SILAGE TRIALS

Company	Brand	Address
Augusta Seed	Augusta Seed	PO Box 2606, Staunton, VA 24401
Chemgro Seeds	Chemgro	PO Box 218, East Petersburg, PA 17520
Crop Production Services	Dyna-Gro	15277 Richmond Tappahannock Hwy, St. Stephens Church, VA 23148
Doebler's PA Hybrids, Inc	Doebler's and RPM	202 Tiadaghton Ave., Jersey Shore, PA 17740
Dupont Pioneer	Dupont Pioneer	700 Boulevard South Suite 302, Huntsville, AL 35802
Healthy Herd Genetics & Nutrition	Healthy Herd Genetics	306 Manor Place, Greenport, NY 11944
Hubner Seed	Hubner Seed	10280 W. State Rd 28, West Lebanon, IN 47991
King's AgriSeeds, Inc	Masters Choice	60 North Ronks Rd. Suite K, Ronks, PA 17572-9645
Mid-Atlantic Seeds, Inc	Mid-Atlantic	204 St. Charles Way #163, York, PA 17402
Monsanto	Channel	800 N Lindbergh Blvd., St Louis, MO 63167
Progeny Ag Products	Golden Acres	1529 Hwy 193, Wynne, AR 72396
Seed Consultants, Inc	Seed Consultants	648 Miami Trace Rd, Washington Courthouse, OH 43160
Syngenta	NK	11055 Wayzata Blvd., Minnetonka, MN 55305
T.A. Seeds	T.A. Seeds	PO Box 300, Avis, PA 17721

NARRATIVE

This report contains the results for performance trials from commercial corn hybrids produced for silage at four locations in Virginia in 2013 as well as two and three year average performance, when available. In order to avoid problems with comparisons over sites and years, multi-year yields are presented as a percentage of the total called relative yield at that particular site-year combination. All locations were planted with a Wintersteiger PlotKing 2600 planter and harvested with commercial silage equipment. Yields are presented on a dry matter and 35% dry matter basis for comparison. All hybrids entered in the Virginia trials were submitted for testing by commercial companies. The locations at which particular hybrids were entered were specified by the company. Companies entering hybrids were charged a fee for each hybrid per location to support the Virginia Corn Silage Performance Trials.

Yield Differences

Experimental plots vary in yield and other measurements due to location in the field and other factors which cannot be controlled. Statistics given in the tables are intended to help the reader make valid comparisons between hybrids. The magnitude of differences due to uncontrollable variation has been computed for the data and listed at the bottom of columns as the LSD (.10) (least significant difference with

90% confidence). Differences less than the LSD are assumed not to be real differences with 90% confidence.

Hybrid Choices

Multi-year results are more reliable than single-year results.

When making hybrid selections it is important to realize that hybrids differ in their performance under different environments. Some hybrids are more adapted to a wide range of environments. Hybrid performance may differ with year and location variations of rainfall, temperature, pests and other environmental variables. In these experiments, many hybrids have essentially the same yield, and great care should be taken in interpreting the results of a single year's tests, especially at only one location. For these reasons it is important, whenever possible, to also look at a hybrid's average yield across locations when making selections. Multi-year averages give greater confidence to hybrid performance decisions. Relative yield tables compare the yield of a hybrid to the average yield of all hybrids in the test. These tables are an excellent summary of yield potential compared to other hybrids.

Understanding Relative Yield

Companies entering silage hybrids decide which hybrids are planted at which locations. In 2013, some hybrids were planted at all four locations and others at only one or two sites.

Combining and comparing absolute yield and other results from multiple sites is inappropriate when not all hybrids are planted at all locations. For example, one hybrid might have an unfair advantage in such a comparison because it was tested only at sites with ideal growing conditions. Another hybrid tested at sites with less-than-ideal growing conditions would have yields that tended to be lower. In this example, it would be difficult to determine whether yield differences were because of differences in genetic yield potential or simply because of differences in the environmental conditions under which they were tested. The solution is to compare hybrids based on relative yields rather than absolute yields.

To calculate relative yield, the yield for each hybrid at each site is divided by the average yield for all hybrids tested at that same site and multiplied by 100. Once each hybrid at each site has been assigned a relative yield, comparisons can be made between hybrids tested at the same site or different sites. For hybrids tested at multiple sites, we can also calculate a multi-site relative yield average.

Relative yields of 100 indicate hybrids that were average performers. Relative yields greater than 100 indicate yields above-average. Relative yields less than 100 indicate yields below-average. The magnitude of the relative yield numbers indicate how far above or below average a hybrid performed. For example, a hybrid with a relative yield of 110 yielded 10% above the average yield for all hybrids at that site.

Selecting hybrids for both yield and quality.

Milk2006 is used to condense multiple corn silage quality and digestibility factors into one easy-to-compare "milk per ton" number. This system also generates a "milk per acre" rating for each hybrid, calculated by multiplying yield (tons per acre) by quality (lbs of milk per ton). The same problem described above for multi-site yield comparisons exists for yield by quality comparisons: not all hybrids were tested at all sites. Therefore, relative quality and relative yield x quality ratings were calculated.

Milk2006 is a system developed by University of Wisconsin researchers to simplify quality comparisons between corn silage samples. Included in the analysis are variety identification, kernel processing, dry matter, crude protein, NDF, in-vitro NDF digestibility, starch percent and yield per acre. Compared to Milk2000, Milk2006 values more accurately address the effects of fiber digestibility on silage quality. Milk2006 has proven to more accurately reflect actual milk production than earlier versions of the program.

Milk2006 was designed solely as an index to be used when making quality comparisons between silage samples or hybrids. Milk per ton or milk per acre numbers should not be used to predict actual milk production on your farm. Milk per ton is more accurate at predicting cow performance since it includes quality factors that affect milk production. Milk per acre allows consideration of yield as well as quality factors.

Use other information.

Consider as much other information as possible from other independent sources before selecting hybrids. Look for agronomic as well as silage quality data.

2013 VIRGINIA CORN SILAGE PLOT INFORMATION
(Rates are on a per acre basis.)

Blackstone Southern Piedmont Agricultural Research & Extension Center (notill site)

Planted: April 24, 2013

Harvested: August 12, 2013

Pesticide: 5 lb Force 3G® at planting; 2 qt Buccaneer® Plus, 1.5 pt Dual Magnum®, 4 qt atrazine April 16, 2013

Fertilizer: 1000 lb 10-10-10 preplant incorporated April 15, 2013; 17 gal 20-10-0-2.2S-.13B-.25Zn at planting; 80 lb N topdressed using UAN May 22, 2013

Plot Size: 2 rows 25' x 30" 4 replications

Soil Type: Sandy loam

Cooperator: Ned Jones

Orange Northern Piedmont Agricultural Research & Extension Center

Planted: May 15, 2013

Harvested: August 22, 2013

Pesticide: 5 lb Force 3G® at planting; 3.3 oz Corvus® + 3.2 pt Atrazine 4L + 1 qt Roundup preplant

Fertilizer: 9000 gal liquid dairy slurry ~ 117 lb N; 17 gal 20-10-0-2.2S-.13B-.25Zn at planting; 65 lb N + S sidedressed

Plot Size: 2 rows 25' x 30" 4 replications

Soil Type: Dyke loam

Cooperators: Steve Gulick

Shenandoah Valley (Timberville - Thanks to David Yutzy)

Planted: May 20, 2013

Harvested: September 10, 2013

Pesticide: 5 lb Force 3G® at planting; 1.125 qt Aatrex® (atrazine) + 1.5 qt Princep® + 5.8 oz Asana® + 1.5 qt Lumax® May 12, 2012; 1.5 qt Prowl® + 0.5 oz Profine (generic Permit) + 1.25 qt Touchdown Total® (glyphosate)

Fertilizer: Preplant broadcast 8 tons dairy heifer bed; 17 gal 20-10-0-2.2S-.127B-.25Zn at planting; 20 lb S as AMS + chemicals May 12, 2012

Plot Size: 2 rows 35' x 30" 4 replications

Soil Type: Endcav silt loam

Cooperators: Matt Yancey and David Yutzy

Washington County (Thanks to Johnny Robinson)

Planted: May 16, 2013

Harvested: September 20, 2013

Pesticide: 5 lb Force 3G® at planting; Roundup® plus 3 qt Lumax plus 1 qt atrazine post planting; spot treatment with Accent® for johnsongrass

Fertilizer: 116-23-100 preplant; 17 gal 20-10-0-2.2S-.127B-.25Zn at planting; 75 lb N sidedressed

Plot Size: 2 rows 35' x 30" 4 replications

Soil Type: Wyrick-Marbie

Cooperators: Phil Blevins and Johnny Robinson

Table 1. List of Hybrids in the 2013 VA Tech Corn Silage Hybrid Test

Brand	Hybrid	ID	Trait Group¹	DTM²	OBS³	Insecticide
Augusta	A5461	8109	2	112	2	C
Augusta	A5462A	8111	6	112	2	C
Augusta	A5262	8046	6	112	4	C
Augusta	A5363	8047	28	113	1	C
Augusta	A5565	8048	28	115	2	C
Augusta	A5465	8151	2	115	4	C
Augusta	A6665	8155	28	115	4	C
Augusta	A6866	8153	6	116	4	C
Augusta	A6867	8049	2	117	1	C
Augusta	A7767	8152	28	117	4	C
Augusta	A6767	8157	6	117	4	C
Augusta	A7768	8154	0	118	4	C
Channel	214-14VT3PRIB Brand	4754	31	114	4	P500/V
Channel	215-82VT3PRIB Brand	4765	31	115	4	P500/V
Channel	218-73VT3PRIB Brand	4797	31	118	4	P500/V
Chemgro	7348G3	8255	6	113	1	C
Chemgro	7647RVP	8257	31	116	1	PL
Chemgro	7747RVP	8253	31	117	1	PL
Chemgro	7798G3	8256	6	117	1	C
Doebblers	RPM® 604HRQ™	5147	12	108	4	C
Doebblers	RPM® 657AM™	5148	15	112	4	C
Doebblers	RPM® 688AMX™	5141	18	113	4	C
Doebblers	698GRQ	5149	6	114	4	C
Doebblers	RPM® 743HXR™	5142	12	116	4	C
Doebblers	RPM® 765YHR™	5150	21	117	4	C
Dupont Pioneer	P0912AM	5065	17	109	4	PH
Dupont Pioneer	P1105YHR	5077	20	110	4	PH
Dupont Pioneer	P1184AMX	5059	18	111	4	PH
Dupont Pioneer	P1319HR	5067	12	113	4	PH
Dupont Pioneer	P1498CHR	5068	12	114	4	PH
Dupont Pioneer	P1449XR	5075	18	114	4	PH
Dupont Pioneer	P1690AM	5074	17	116	4	PH
Dupont Pioneer	P2088YXR	5076	21	120	4	PH
Dyna-Gro	D55GT73	4085	0	115	4	AV
Dyna-Gro	D57VP75	4079	31	117	4	AV
Dyna-Gro	D59HR50	4080	14	119	4	AV
Healthy Herd Genetics	86HFC13	9002	12	116	2	PH
Healthy Herd Genetics	87A12	9001	12	117	2	PH
Healthy Herd Genetics	87HFC14	9003	12	117	2	PH
Hubner Seed	H5420RC3P	4863	31	110	4	PL
Hubner Seed	H5867RC3P	4865	31	115	4	PL
Hubner Seed	H6844RCSS	4866	33	115	4	PL
Masters Choice	MCT 6583 3000GT	4806	6	115	3	PL
Masters Choice	MCT 6753 3000GT	4805	6	117	3	PL
Mid-Atlantic Seeds	MA8111VT3PRO	4910	31	111	1	C
Mid-Atlantic Seeds	MAX8151VT3PRO	4747	31	115	1	C
Mid-Atlantic Seeds	MA8150VT3PRO	4915	31	115	1	C

Table 1, cont'd. List of Hybrids in the 2013 VA Tech Corn Silage Hybrid Test

Brand	Hybrid	ID	Trait Group¹	DTM²	OBS³	Insecticide
Mid-Atlantic Seeds	MA8154SS	4916	32	115	1	C
Mid-Atlantic Seeds	MA8157VT3PRO	4919	31	115	1	C
Mid-Atlantic Seeds	MA7161HXRR2	4748	12	116	1	C
NK	N74R 3000GT Brand	8980	6	113	2	C
NK	N79Z 3000GT Brand	8990	6	114	2	C
Seed Consultants	SCS 11HR21™	4627	12	111	4	PH
Seed Consultants	SCS 11HQ39™	4594	14	112	4	PH
Seed Consultants	SCS 1131AM-R™	4645	15	112	4	C
Seed Consultants	SCS 11HQ33™	4646	14	112	4	PH
Seed Consultants	SC 11AQ43™	4640	6	113	4	PH
Seed Consultants	SCS 1154AM-R™	4647	15	114	4	C
Seed Consultants	SCS 11HR63™	4638	12	115	4	PL
Seed Consultants	SC 11AQ72™	4637	6	117	4	PH
Seed Consultants	SCS 1184AM-R™	4648	15	117	4	C
T.A. Seeds	TA683-22DP	5405	30	112	4	C
T.A. Seeds	TA744-22DP	5410	30	114	4	C
T.A. Seeds	TA753-22DP	5412	30	115	4	C
T.A. Seeds	TA765-30	5413	8	115	4	C
T.A. Seeds	TA774-13VP	5414	31	116	4	C

¹ Trait Group according to Table 2.

² Days to maturity (DTM) provided by company; differences in maturity rating methods may exist.

³ Number of observations hybrid occurred (OBS); the greater the observations, the more reliable the data.

Shaded hybrids indicate hybrids entered in less than 3 locations. Hybrids are sorted by Brand then DTM.

Table 2. 29-Oct-12	Bt protein(s)	Insects controlled (bold) <i>or suppressed (italics)</i> <i>Above-ground ----- In soil</i>	Herbicide tolerance	Refuge %, location Non-cotton counties	
Agrisure products					
1-Agrisure CB/LL	Cry1Ab	ECB <i>CEW FAW SB</i>	---	LL	20% within ½ mile
2-Agrisure GT/CB/LL	Cry1Ab	ECB <i>CEW FAW SB</i>	---	GT LL	20% within ½ mile
3-Agrisure RW	mCry3A	---	CRW	--	20% in field/adjacent
4-Agrisure GT/RW	mCry3A	---	CRW	GT	20% in field/adjacent
5-Agrisure CB/LL/RW	Cry1Ab mCry3A	ECB <i>CEW FAW SB</i>	CRW	LL	20% in field/adjacent
6-Agrisure 3000GT	Cry1Ab mCry3A	ECB <i>CEW FAW SB</i>	CRW	GT LL	20% in field/adjacent
7-Agrisure Artesian 4011	Cry1Ab mCry3A	ECB <i>CEW, FAW, SB</i>	CRW	GT LL	20% in field/adjacent
8-Agrisure Viptera 3110	Cry1Ab Vip3A	BCW CEW ECB FAW WBC SB	---	GT LL	20% within ½ mile
9-Agrisure Viptera 3111	Cry1Ab mCry3A Vip3A	BCW CEW ECB FAW WBC SB	CRW	GT LL	20% in field/adjacent
10-Agrisure 3122 E-Z Refuge	Cry1Ab Cry1F mCry3A Cry34/35Ab1	BCW ECB FAW WBC <i>CEW SB</i>	CRW	GT	5% in the bag
11-Agrisure Viptera 3220 E-Z Refuge	Cry1Ab Cry1F Vip3A	BCW CEW ECB FAW WBC SB	---	GT	5% in the bag
Herculex products					
12-Herculex 1 (HX1)	Cry1F	BCW ECB FAW WBC <i>CEW SB</i>	---	LL RR2 (some)	20% within ½ mile
13-Herculex RW (HXRW)	Cry34/35Ab1	---	CRW	LL RR2 (some)	20% in field/adjacent
14-Herculex XTRA (HXX)	Cry1F Cry34/35Ab1	BCW ECB FAW WBC <i>CEW SB</i>	CRW	LL RR2 (some)	20% in field/adjacent
Optimum products					
15-Optimum (AM-R) AcreMax	Cry1F Cry1Ab	BCW ECB FAW WBC <i>CEW SB</i>	---	RR2	5% in the bag
16-Optimum (AMRW-R) AcreMax Rootworm	Cry34/35Ab1	---	CRW	RR2	10% in the bag
17-Optimum (AM1) AcreMax1	Cry1F Cry34/35Ab1	BCW ECB FAW WBC <i>CEW SB</i>	CRW	LL RR2	10% in the bag (CRW) 20% -½ mile (ECB)

18-Optimum (AMX-R) AcreMax Xtra	Cry1F Cry1Ab Cry34/35Ab1	BCW ECB FAW WBC CEW SB	CRW	RR2	10% in the bag
19-Optimum (AMXT-R) AcreMax Xtreme	Cry1F Cry1Ab mCry3A Cry34/35Ab1	BCW ECB FAW WBC CEW SB	CRW	RR2	5% in the bag
20-Optimum Intrasect	Cry1F Cry1Ab	BCW ECB FAW WBC CEW SB	---	LL RR2	5% within ½ mile
21-Optimum Intrasect Xtra	Cry1F Cry1Ab Cry34/35Ab1	BCW ECB FAW WBC CEW SB	CRW	LL RR2	20% in field/adjacent
22-Optimum Intrasect Xtreme	Cry1F Cry1Ab mCry3A Cry34/35Ab1	BCW ECB FAW WBC CEW SB	CRW	LL RR2	5% in field/adjacent
23-Optimum TRIssect	Cry1F mCry3A	BCW ECB FAW WBC CEW SB	CRW	LL RR2	20% in field/adjacent
YieldGard products					
24-YGCB	Cry1Ab	ECB CEW FAW SB	---	RR2 (some)	20% within ½ mile
25-YGRW	Cry3Bb1	---	CRW	RR2 (some)	20% in field/adjacent
26-YieldGard Plus	Cry1Ab Cry3Bb1	ECB CEW FAW SB	CRW	RR2 (some)	20% in field/adjacent
27-YieldGard VTRW	Cry3Bb1	---	CRW	RR2	20% in field/adjacent
28-YieldGard VT Triple	Cry1Ab Cry3Bb1	ECB CEW FAW SB	CRW	RR2	20% in field/adjacent
Genuity / SmartStax products					
29-Genuity VT Double PRO	Cry1A.105 Cry2Ab2	CEW ECB FAW	---	RR2	5% within ½ mile
30-Genuity VT Double PRO RIB Complete	Cry1A.105 Cry2Ab2	CEW ECB FAW	---	RR2	5% in the bag
31-Genuity VT Triple PRO RIB Complete	Cry1A.105 Cry2Ab2 Cry3Bb1	CEW ECB FAW	CRW	RR2	10% in the bag
32-SmartStax (Dow) or Genuity SmartStax (Monsanto)	Cry1A.105 Cry2Ab2 Cry1F Cry3Bb1 Cry34/35Ab1	BCW CEW ECB FAW WBC SB	CRW	LL RR2	5% in field/adjacent
33-Genuity SmartStax RIB Complete	Same as Genuity SmartStax	BCW CEW ECB FAW WBC SB	CRW	LL RR2	5% in the bag
34-REFUGE ADVANCED Powered by SmartStax	Same as SmartStax	BCW CEW ECB FAW WBC SB	CRW	LL RR2	5% in the bag

Table 3. Multi-year, Multi-site Relative Ton per Acre (Yield)

Brand	Hybrid	DTM per Co. ¹	Shenandoah Valley		Northern Piedmont		Southern Piedmont		Southwest / Mountain		Multi-Site Average	Number of Obs. ²
			2013	2012	2013	2012	2013	2012	2013	2012		
-----Relative Ton per Acre ³ -----												
Mid-Atlantic Seeds	MA8157VT3PRO	115	104 *	133							119	2
Healthy Herd Genetics	87HFC14	117	117 *		115 *						116	2
Seed Consultants	SCS 11HR63™	115	113 *	134	105 *	104	107 *	105	114 *	121 *	113	8
Channel	214-14VT3PRIB Brand	114	116 *	184 *	94	107	91	96	91	115 *	112	8
Seed Consultants	SCS 11HQ39™	112	107 *	146	96	99	95	124 *	99	126 *	112	8
T.A. Seeds	TA765-30	115	114 *		108 *		109 *		104 *		109	4
Augusta	A5565	115	108 *	152 *	101	104		92		93	109	6
Dupont Pioneer	P2088YXR	120	98		107 *		111 *		117 *		108	4
Chemgro	7348G3	113	108 *								108	1
Augusta	A6867	117	103 *	117		103		103		110 *	107	5
Mid-Atlantic Seeds	MA7161HXRR2	116	92	121							107	2
Doebblers	RPM® 657AM™	112	113 *		113 *		100		99		106	4
Seed Consultants	SCS 11HQ33™	112	122 *		110 *		98		95		106	4
Healthy Herd Genetics	86HFC13	116	106 *		106 *						106	2
Seed Consultants	SCS 1154AM-R™	114	99 *		107 *		104 *		111 *		106	4
Channel	218-73VT3PRIB Brand	118	119 *	101	113 *	102	112 *	104	98	96	106	8
Doebblers	698GRQ	114	105 *		96		99		120 *		105	4
Doebblers	RPM® 688AMX™	113	99 *	155 *	102 *	101	104 *	102	94	83	105	8
Seed Consultants	SCS 1184AM-R™	117	105 *		103 *		101		110 *		105	4
Augusta	A5461	112	99 *	122		91		87	114 *	116 *	105	6
Augusta	A5462A	112	116 *	117	112 *	111		88		83	104	6
Seed Consultants	SCS 1131AM-R™	112	96		106 *		114 *		99		104	4
Mid-Atlantic Seeds	MAX8151VT3PRO	115	96	110							103	2
Doebblers	RPM® 743HXR™	116	104 *	97	107 *	99	114 *	101	100	103	103	8
Doebblers	RPM® 765YHR™	117	120 *		93		100		99		103	4
T.A. Seeds	TA753-22DP	115	115 *		100		96		95		102	4
Augusta	A5262	112	104 *		104 *		91		108 *		102	4
Seed Consultants	SCS 11HR21™	111	100 *	97	99	104	114 *	107	72	120 *	102	8
Dyna-Gro	D55GT73	115	88		102		105 *		112 *		102	4

Table 3, cont'd. Multi-year, Multi-site Relative Ton per Acre (Yield)

Brand	Hybrid	DTM per Co. ¹	Shenandoah Valley		Northern Piedmont		Southern Piedmont		Southwest / Mountain		Multi-Site Average	Number of Obs. ²
			2013	2012	2013	2012	2013	2012	2013	2012		
-----Relative Ton per Acre ³ -----												
Dyna-Gro	D59HR50	119	103 *		101		103 *		98		101	4
Augusta	A6767	117	97		104 *		99		104 *		101	4
NK	N79Z 3000GT Brand	114	102 *						100		101	2
Healthy Herd Genetics	87A12	117	99 *		101						100	2
Masters Choice	MCT 6753 3000GT	117	88	108	89	105	103 *	106			100	6
Seed Consultants	SC 11AQ72™	117	109 *	79	92	101	111 *	102	107 *	98	100	8
Dupont Pioneer	P1319HR	113	111 *		94		100		93		100	4
Augusta	A5363	113	90	121		100		99		87	100	5
Seed Consultants	SC 11AQ43™	113	95		100		91		112 *		99	4
Augusta	A7768	118	94		96		100		106 *		99	4
Augusta	A5465	115	102 *		98		96		99		99	4
Dupont Pioneer	P1184AMX	111	100 *	122	97	106	93	104	84	81	98	8
Dupont Pioneer	P0912AM	109	113 *	64	107 *	81	100	102	111 *	107 *	98	8
Masters Choice	MCT 6583 3000GT	115	105 *		96		92				98	3
Dupont Pioneer	P1498CHR	114	109 *	79	100	103	101	108	98	85	98	8
Dupont Pioneer	P1690AM	116	86		99		103 *		103 *		98	4
Hubner Seed	H5867RC3P	115	111 *		92		97		89		97	4
NK	N74R 3000GT Brand	113	104 *						105 *	83	97	3
Channel	215-82VT3PRIB Brand	115	100 *		97		91		97		97	4
Augusta	A6866	116	83		95		101		107 *		96	4
Hubner Seed	H6844RCSS	115	93		97		96		99		96	4
T.A. Seeds	TA683-22DP	112	102 *		98		93		90		96	4
Dupont Pioneer	P1105YHR	110	98 *		91		103 *		86		95	4
Doebblers	RPM® 604HRQ™	108	90		92		105 *		87		94	4
T.A. Seeds	TA744-22DP	114	109 *		86		90		89		93	4
Hubner Seed	H5420RC3P	110	77		99		96		101		93	4
Chemgro	7798G3	117	93								93	1
Dyna-Gro	D57VP75	117	60		101		104 *		107 *		93	4
Chemgro	7747RVP	117	103 *	79							91	2

Table 3, cont'd. Multi-year, Multi-site Relative Ton per Acre (Yield)

Brand	Hybrid	DTM per Co. ¹	Shenandoah Valley		Northern Piedmont		Southern Piedmont		Southwest / Mountain		Multi-Site Average	Number of Obs. ²
			2013	2012	2013	2012	2013	2012	2013	2012		
-----Relative Ton per Acre ³ -----												
Augusta	A6665	115	75		98		94		97		91	4
Mid-Atlantic Seeds	MA8150VT3PRO	115	91	91							91	2
Dupont Pioneer	P1449XR	114	73		92		99		100		91	4
Chemgro	7647RVP	116	90								90	1
T.A. Seeds	TA774-13VP	116	89		98		82		87		89	4
Augusta	A7767	117	82		92		87		92		88	4
Mid-Atlantic Seeds	MA8111VT3PRO	111	87								87	1

¹ Days to maturity provided by company; differences in maturity rating methods may exist between companies.

² Hybrids that were tested over more site/year combinations provide a better estimate of hybrid performance than those tested only in a single site/year location.

³ Relative Ton per Acre (yield) calculated by dividing Ton per Acre for each hybrid at each site/year by the average Ton per Acre for that site/year. Numbers over 100 indicate above-average yield, 100 indicates average yield, numbers under 100 indicate below-average yield.

* Indicates numbers similar to the highest value in that column (i.e. within one LSD of the top performer.)

Shading indicates hybrids that were in the highest yielding group in at least three site years.

Table 4. Multi-year, Multi-site Relative Milk per Ton (Quality)

Brand	Hybrid	DTM per Co. ¹	Shenandoah Valley		Northern Piedmont		Southern Piedmont		Southwest / Mountain		Multi-Site Average	Number of Obs. ²
			2013	2012	2013	2012	2013	2012	2013	2012		
-----Relative Milk per Ton ³ -----												
Dupont Pioneer	P1449XR	114	105 *		106 *		103 *		108 *		106	4
Chemgro	7747RVP	117	102 *	107 *							105	2
Chemgro	7647RVP	116	104 *								104	1
Mid-Atlantic Seeds	MA8157VT3PRO	115	101 *	106 *							103	2
Mid-Atlantic Seeds	MA8150VT3PRO	115	104 *	103 *							103	2
Dupont Pioneer	P1105YHR	110	101 *		104 *		104 *		103 *		103	4
T.A. Seeds	TA774-13VP	116	104 *		101		99		108 *		103	4
Augusta	A7767	117	100		102 *		104 *		104 *		102	4
Mid-Atlantic Seeds	MAX8151VT3PRO	115	104 *	101 *							102	2
T.A. Seeds	TA765-30	115	101 *		99		101 *		108 *		102	4
Seed Consultants	SCS 11HR21™	111	103 *	100 *	103 *	104 *	100 *	108 *	99 *	100	102	8
Masters Choice	MCT 6583 3000GT	115	104 *		99		103 *				102	3
Augusta	A6867	117	104 *	104 *		101 *		109 *		92	102	5
Seed Consultants	SCS 11HQ39™	112	102 *	96	103 *	102 *	105 *	106 *	98	106 *	102	8
Chemgro	7798G3	117	102 *								102	1
Augusta	A6866	116	100 *		104 *		102 *		100 *		101	4
Channel	218-73VT3PRIB Brand	118	104 *	106 *	98	100 *	101 *	98	105 *	98	101	8
Dupont Pioneer	P2088YXR	120	101 *		104 *		104 *		97		101	4
Chemgro	7348G3	113	101 *								101	1
NK	N79Z 3000GT Brand	114	97						105 *		101	2
Dyna-Gro	D59HR50	119	100 *		100		99 *		104 *		101	4
Dupont Pioneer	P1498CHR	114	100 *	98	100	102 *	101 *	105 *	101 *	101 *	101	8
Augusta	A7768	118	98		101		103 *		102 *		101	4
Masters Choice	MCT 6753 3000GT	117	102 *	102 *	100	100 *	100 *	100 *			101	6
Channel	215-82VT3PRIB Brand	115	103 *		99		97		104 *		101	4
Hubner Seed	H6844RCSS	115	98		100		101 *		104 *		101	4
Seed Consultants	SC 11AQ72™	117	101 *	102 *	98	101 *	101 *	95	106 *	100	101	8
Seed Consultants	SCS 1131AM-R™	112	99		102 *		100 *		101 *		101	4

Table 4, cont'd. Multi-year, Multi-site Relative Milk per Ton (Quality)

Brand	Hybrid	DTM per Co. ¹	Shenandoah Valley		Northern Piedmont		Southern Piedmont		Southwest / Mountain		Multi-Site Average	Number of Obs. ²
			2013	2012	2013	2012	2013	2012	2013	2012		
-----Relative Milk per Ton ³ -----												
Augusta	A5462A	112	96	101 *	98	101 *		106 *		101 *	101	6
Dyna-Gro	D55GT73	115	103 *		103 *		97		100 *		101	4
Doebler's	RPM® 688AMX™	113	98	105 *	101	100 *	104 *	103 *	98	95	101	8
Hubner Seed	H5867RC3P	115	104 *		100		100 *		96		100	4
Doebler's	RPM® 743HXR™	116	102 *	96	103 *	98	102 *	102 *	99	101 *	100	8
Dyna-Gro	D57VP75	117	97		97		101 *		106 *		100	4
NK	N74R 3000GT Brand	113	106 *						94	100	100	3
T.A. Seeds	TA744-22DP	114	94		101		102 *		102 *		100	4
T.A. Seeds	TA683-22DP	112	104 *		101		96		99		100	4
Seed Consultants	SCS 1184AM-R™	117	99		101		100 *		99 *		100	4
Doebler's	RPM® 765YHR™	117	101 *		101		100 *		97		100	4
Dupont Pioneer	P1319HR	113	95		100		104 *		100 *		100	4
Augusta	A5363	113	102 *	98		99		99		100	100	5
Augusta	A5465	115	101 *		101		96		100 *		99	4
Doebler's	RPM® 604HRQ™	108	100 *		102		94		102 *		99	4
T.A. Seeds	TA753-22DP	115	99		101		99		99		99	4
Augusta	A5262	112	104 *		99		98		97		99	4
Doebler's	RPM® 657AM™	112	100 *		101		99 *		96		99	4
Mid-Atlantic Seeds	MA7161HXRR2	116	98	101 *							99	2
Channel	214-14VT3PRIB Brand	114	99	97	99	103 *	102 *	98	98	98	99	8
Hubner Seed	H5420RC3P	110	94		102		103 *		98		99	4
Dupont Pioneer	P1690AM	116	97		103 *		98		98		99	4
Dupont Pioneer	P1184AMX	111	94	91	99	104 *	101 *	99	103 *	98	99	8
Seed Consultants	SC 11AQ43™	113	101 *		96		101 *		95		98	4
Seed Consultants	SCS 1154AM-R™	114	102 *		99		93		99 *		98	4
Doebler's	698GRQ	114	99		100		99		95		98	4
Seed Consultants	SCS 11HQ33™	112	97		101		97		96		98	4
Healthy Herd Genetics	87A12	117	102 *		93						98	2
Mid-Atlantic Seeds	MA8111VT3PRO	111	97								97	1

Table 4, cont'd. Multi-year, Multi-site Relative Milk per Ton (Quality)

Brand	Hybrid	DTM per Co. ¹	Shenandoah Valley		Northern Piedmont		Southern Piedmont		Southwest / Mountain		Multi-Site Average	Number of Obs. ²
			2013	2012	2013	2012	2013	2012	2013	2012		
-----Relative Milk per Ton ³ -----												
Augusta	A6665	115	96		100		98		96		97	4
Seed Consultants	SCS 11HR63™	115	95	99	97	98	96	95	102 *	98	97	8
Augusta	A6767	117	97		100		96		95		97	4
Dupont Pioneer	P0912AM	109	93	96	97	96	99	95	92	98	96	8
Augusta	A5461	112	101 *	91		97		89	92	100	95	6
Augusta	A5565	115	100 *	81	95	99		99		95	95	6
Healthy Herd Genetics	86HFC13	116	96		93						94	2
Healthy Herd Genetics	87HFC14	117	88		94						91	2

¹ Days to maturity provided by company; differences in maturity rating methods may exist between companies.

² Hybrids that were tested over more site/year combinations provide a better estimate of hybrid performance than those tested only in a single site/year location.

³ Relative Milk per Ton (quality) calculated by dividing Milk per Ton for each hybrid at each site/year by the average Milk per Ton for that site/year. Numbers over 100 indicate above-average yield, 100 indicates average yield, numbers under 100 indicate below-average yield.

* Indicates numbers similar to the highest value in that column (i.e. within one LSD of the top performer.)

Shading indicates hybrids that were in the highest yielding group in at least three site years.

Table 5. Multi-year, Multi-site Relative Milk per Acre (Yield X Quality)

Brand	Hybrid	DTM per Co. ¹	Shenandoah Valley		Northern Piedmont		Southern Piedmont		Southwest / Mountain		Multi-Site Average	Number of Obs. ²
			2013	2012	2013	2012	2013	2012	2013	2012		
-----Relative Milk per Acre ³ -----												
Mid-Atlantic Seeds	MA8157VT3PRO	115	105 *	141							123	2
Seed Consultants	SCS 11HQ39™	112	110 *	140	99	101	100	131 *	97	133 *	114	8
T.A. Seeds	TA765-30	115	116 *		106 *		110 *		112 *		111	4
Channel	214-14VT3PRIB Brand	114	114 *	178 *	93	111	92	94	89	111 *	110	8
Seed Consultants	SCS 11HR63™	115	107 *	133	102 *	102	104 *	99	116 *	119 *	110	8
Augusta	A6867	117	107 *	122		104		113		102	110	5
Chemgro	7348G3	113	109 *								109	1
Dupont Pioneer	P2088YXR	120	95		111 *		115 *		113 *		109	4
Channel	218-73VT3PRIB Brand	118	124 *	107	111 *	103	113 *	101	103 *	94	107	8
Mid-Atlantic Seeds	MA7161HXRR2	116	90	123							106	2
Doebblers	RPM® 688AMX™	113	98	162 *	103 *	101	109 *	105	91	80	106	8
Doebblers	RPM® 657AM™	112	114 *		115 *		99		96		106	4
Healthy Herd Genetics	87HFC14	117	104 *		108 *						106	2
Mid-Atlantic Seeds	MAX8151VT3PRO	115	100 *	112							106	2
Augusta	A5462A	112	111 *	118	110 *	112		93		84	105	6
Seed Consultants	SCS 1184AM-R™	117	104 *		104 *		101		109 *		105	4
Seed Consultants	SCS 1131AM-R™	112	95		109 *		113 *		100 *		104	4
Seed Consultants	SCS 11HR21™	111	103 *	97	102 *	108	114 *	116	72	120 *	104	8
Seed Consultants	SCS 11HQ33™	112	119 *		111 *		95		91		104	4
Doebblers	698GRQ	114	106 *		96		98		115 *		104	4
Dyna-Gro	D59HR50	119	108 *		102 *		103		103 *		104	4
Seed Consultants	SCS 1154AM-R™	114	101 *		107 *		96		111 *		104	4
Doebblers	RPM® 743HXR™	116	107 *	93	110 *	97	117 *	103	98	105	104	8
Doebblers	RPM® 765YHR™	117	120 *		94		101		96		103	4
NK	N79Z 3000GT Brand	114	100 *						105 *		102	2
Dyna-Gro	D55GT73	115	90		104 *		101		113 *		102	4
Augusta	A5565	115	107 *	123	96	104		90		89	101	6
T.A. Seeds	TA753-22DP	115	114 *		101		95		96		101	4

Table 5, cont'd. Multi-year, Multi-site Relative Milk per Acre (Yield X Quality)

Brand	Hybrid	DTM per Co. ¹	Shenandoah Valley		Northern Piedmont		Southern Piedmont		Southwest / Mountain		Multi-Site Average	Number of Obs. ²
			2013	2012	2013	2012	2013	2012	2013	2012		
-----Relative Milk per Acre ³ -----												
Augusta	A5262	112	108 *		102 *		89		106 *		101	4
Masters Choice	MCT 6753 3000GT	117	91	110	90	105	104 *	106			101	6
Masters Choice	MCT 6583 3000GT	115	111 *		96		95				101	3
Seed Consultants	SC 11AQ72™	117	110 *	81	91	102	112 *	97	115 *	98	101	8
Healthy Herd Genetics	86HFC13	116	102 *		98						100	2
Augusta	A7768	118	92		97		102		108 *		100	4
Dupont Pioneer	P1498CHR	114	116 *	79	100	105	103	112	99	86	100	8
Augusta	A5461	112	100 *	112		88		78	105 *	115 *	100	6
Dupont Pioneer	P1319HR	113	105 *		95		104 *		94		99	4
Augusta	A5363	113	91	119		99		98		88	99	5
Healthy Herd Genetics	87A12	117	101 *		95						98	2
Augusta	A6767	117	94		103 *		95		99		98	4
Augusta	A5465	115	102 *		99		92		99		98	4
Augusta	A6866	116	83		98		103		106 *		98	4
Seed Consultants	SC 11AQ43™	113	96		96		92		106 *		98	4
NK	N74R 3000GT Brand	113	110 *						99	84	98	3
Hubner Seed	H5867RC3P	115	115 *		92		98		86		98	4
Dupont Pioneer	P1105YHR	110	98		95		108 *		89		97	4
Channel	215-82VT3PRIB Brand	115	103 *		96		88		100 *		97	4
Hubner Seed	H6844RCSS	115	91		97		96		103 *		97	4
Dupont Pioneer	P1184AMX	111	94	111	95	110	94	103	87	79	97	8
Dupont Pioneer	P1690AM	116	83		101		101		101 *		97	4
Dupont Pioneer	P1449XR	114	78		98		102		107 *		96	4
T.A. Seeds	TA683-22DP	112	106 *		98		89		89		96	4
Chemgro	7747RVP	117	104 *	84							94	2
Dupont Pioneer	P0912AM	109	106 *	62	104 *	78	99	97	103 *	105	94	8
Chemgro	7798G3	117	94								94	1
Dyna-Gro	D57VP75	117	59		97		105 *		113 *		94	4
T.A. Seeds	TA744-22DP	114	103 *		87		91		91		93	4

Table 5, cont'd. Multi-year, Multi-site Relative Milk per Acre (Yield X Quality)

Brand	Hybrid	DTM per Co. ¹	Shenandoah Valley		Northern Piedmont		Southern Piedmont		Southwest / Mountain		Multi-Site Average	Number of Obs. ²
			2013	2012	2013	2012	2013	2012	2013	2012		
-----Relative Milk per Acre ³ -----												
Chemgro	7647RVP	116	93								93	1
Mid-Atlantic Seeds	MA8150VT3PRO	115	91	95							93	2
Hubner Seed	H5420RC3P	110	72		101		99		99		93	4
Doebler's	RPM® 604HRQ™	108	90		94		98		88		93	4
T.A. Seeds	TA774-13VP	116	92		99		81		93		92	4
Augusta	A7767	117	82		94		91		96		91	4
Augusta	A6665	115	72		98		92		94		89	4
Mid-Atlantic Seeds	MA8111VT3PRO	111	85								85	1

¹ Days to maturity provided by company; differences in maturity rating methods may exist between companies.

² Hybrids that were tested over more site/year combinations provide a better estimate of hybrid performance than those tested only in a single site/year location.

³ Relative Milk per Acre (yield x quality) calculated by dividing Milk per Acre for each hybrid at each site/year by the average Milk per Acre for that site/year.

Numbers over 100 indicate above-average yield, 100 indicates average yield, numbers under 100 indicate below-average yield.

* Indicates numbers similar to the highest value in that column (i.e. within one LSD of the top performer.)

Shading indicates hybrids that were in the highest yielding group in at least three site years.

Table 6. 2013 Corn Silage Test Results at the Shenandoah Valley Site

Brand	Hybrid	DTM ¹	DM at Harvest	Yield at 35% DM	DM Yield	Crude Protein	ADF	NDF	NDF Digest.	NE _L	TDN	Milk2006	Milk2006
		--Days--	%	ton/acre	ton/acre	-----%-----				Mcal/lb	%	lb milk/ton	lb milk/acre
Channel	218-73VT3PRIB Brand	118	32.67	27.91	* 9.77	* 7.93	* 27.22	46.56	59.96	0.68	* 70	* 3174	* 31049
Doebler	RPM® 765YHR™	117	32.94	28.22	* 9.88	* 8.52	* 27.63	46.61	59.58	0.67	* 68	* 3074	* 30092
Seed Consultants	SCS 11HQ33™	112	35.57	28.61	* 10.01	* 8.50	* 27.30	48.09	59.71	0.65	67	2961	29686
Dupont Pioneer	P1498CHR	114	35.07	25.51	* 8.93	* 8.27	* 27.18	43.88	58.80	0.66	* 68	3041	28950
T.A. Seeds	TA765-30	115	33.24	26.87	* 9.41	* 8.52	* 26.41	47.84	60.75	0.67	* 68	* 3070	* 28924
Hubner Seed	H5867RC3P	115	33.22	26.13	* 9.14	* 8.20	* 26.07	44.07	57.68	0.68	* 69	* 3166	* 28691
T.A. Seeds	TA753-22DP	115	35.29	27.04	* 9.46	* 7.60	26.91	45.68	58.77	0.66	* 68	3016	28584
Channel	214-14VT3PRIB Brand	114	34.28	27.18	* 9.51	* 8.00	* 27.90	46.84	58.93	0.66	* 67	3004	28516
Doebler	RPM® 657AM™	112	34.65	26.61	* 9.32	* 8.07	* 27.46	46.23	59.83	0.67	* 68	3052	28429
Masters Choice	MCT 6583 3000GT	115	32.28	24.77	* 8.67	* 8.09	* 27.50	45.21	60.67	0.68	* 70	* 3171	* 27856
Augusta	A5462A	112	34.13	27.16	* 9.50	* 7.03	30.14	50.83	58.86	0.64	66	2920	27758
NK	N74R 3000GT Brand	113	32.29	24.47	* 8.57	* 7.59	27.65	44.42	59.90	0.69	* 70	* 3225	* 27645
Seed Consultants	SCS 11HQ39™	112	33.31	25.24	* 8.84	* 8.15	* 27.50	46.37	61.19	0.67	* 69	* 3104	* 27466
Seed Consultants	SC 11AQ72™	117	33.42	25.56	* 8.95	* 8.20	* 27.93	46.96	59.69	0.67	* 68	* 3073	* 27427
Chemgro	7348G3	113	32.64	25.29	* 8.85	* 7.84	27.49	48.42	58.85	0.67	* 68	3069	27214
Dyna-Gro	D59HR50	119	31.01	24.10	* 8.43	* 7.75	30.45	47.83	60.00	0.66	* 68	3050	26968
Augusta	A5262	112	32.44	24.41	* 8.54	* 7.99	* 27.15	45.84	59.65	0.68	* 69	* 3152	* 26923
Augusta	A5565	115	32.77	25.43	* 8.90	* 8.49	* 26.83	45.94	56.46	0.66	* 67	3033	26883
Augusta	A6867	117	34.03	24.29	* 8.50	* 8.32	* 27.11	45.19	60.79	0.68	* 70	* 3156	* 26818
Seed Consultants	SCS 11HR63™	115	34.28	26.62	* 9.32	* 7.22	31.50	* 51.54	60.29	0.64	66	2875	26717
Doebler	RPM® 743HXR™	116	32.95	24.55	* 8.59	* 7.72	29.27	48.37	60.76	0.67	* 69	* 3090	* 26663
Dupont Pioneer	P0912AM	109	35.14	26.59	* 9.31	* 7.54	30.75	* 50.71	60.06	0.63	65	2837	26626
T.A. Seeds	TA683-22DP	112	34.61	23.99	* 8.40	* 7.64	27.84	46.46	62.24	0.68	* 70	* 3164	* 26623
Doebler	698GRQ	114	33.32	24.73	* 8.66	* 7.88	* 28.98	48.60	59.29	0.66	* 67	2993	26448
Dupont Pioneer	P1319HR	113	35.23	26.13	* 9.15	* 8.64	* 27.62	48.85	57.59	0.64	66	2883	26388
Mid-Atlantic Seeds	MA8157VT3PRO	115	32.26	24.56	* 8.60	* 7.77	28.21	49.83	60.78	0.67	* 69	* 3073	* 26242
Seed Consultants	SCS 1184AM-R™	117	33.04	24.74	* 8.66	* 7.59	29.46	50.02	60.82	0.66	* 68	3018	26137
Chemgro	7747RVP	117	31.22	24.27	* 8.49	* 8.28	* 26.81	48.69	60.34	0.67	* 69	* 3113	* 26067
Healthy Herd Genetic	87HFC14	117	29.33	27.39	* 9.59	* 7.21	33.32	* 57.06	* 61.40	0.61	64	2682	25949
T.A. Seeds	TA744-22DP	114	34.34	25.58	* 8.95	* 8.16	* 28.73	48.47	57.15	0.64	65	2859	25862

Table 6, cont'd. 2013 Corn Silage Test Results at the Shenandoah Valley Site

Brand	Hybrid	DTM ¹	DM at Harvest	Yield at 35% DM	DM Yield	Crude Protein	ADF	NDF	NDF Digest.	NE _L	TDN	Milk2006	Milk2006
		--Days--	%	ton/acre	ton/acre	-----%				Mcal/lb	%	lb milk/ton	lb milk/acre
Seed Consultants	SCS 11HR21™	111	34.47	23.50	* 8.23	* 7.66	27.95	46.53	62.92	0.67	* 69	* 3122	* 25788
Channel	215-82VT3PRIB Brand	115	33.57	23.50	* 8.22	* 8.08	* 27.49	47.50	60.65	0.68	* 69	* 3136	* 25725
Healthy Herd Genetic	86HFC13	116	29.98	24.92	* 8.72	* 7.83	30.61	* 53.21	* 60.77	0.64	67	2922	25584
Augusta	A5465	115	34.28	23.87	* 8.35	* 8.54	* 26.65	47.10	61.35	0.66	* 68	* 3063	* 25560
Healthy Herd Genetic	87A12	117	31.44	23.37	* 8.18	* 8.33	* 28.23	48.93	61.61	0.67	* 69	* 3084	* 25298
Seed Consultants	SCS 1154AM-R™	114	31.36	23.39	* 8.19	* 8.52	* 28.72	48.61	61.77	0.67	* 69	* 3093	* 25274
Augusta	A5461	112	33.31	23.29	* 8.16	* 7.65	29.01	46.78	60.21	0.67	* 69	* 3076	* 24989
Mid-Atlantic Seeds	MAX8151VT3PRO	115	31.57	22.68	7.94	8.25	* 27.04	45.80	58.64	0.68	* 69	* 3147	* 24960
NK	N79Z 3000GT Brand	114	35.46	23.95	* 8.38	* 7.75	28.70	49.06	60.17	0.65	67	2959	24932
Dupont Pioneer	P1105YHR	110	35.88	23.10	* 8.09	* 8.12	* 27.48	45.06	60.83	0.67	* 69	* 3073	* 24503
Doebler	RPM® 688AMX™	113	33.54	23.35	* 8.17	* 7.51	28.22	48.40	59.19	0.65	67	2980	24492
Seed Consultants	SC 11AQ43™	113	33.42	22.33	7.81	7.33	28.66	48.70	60.07	0.67	* 68	* 3065	* 23945
Dupont Pioneer	P2088YXR	120	32.89	22.99	8.05	6.98	28.03	50.16	60.87	0.67	* 69	* 3071	* 23854
Seed Consultants	SCS 1131AM-R™	112	31.21	22.56	7.90	8.07	* 29.20	48.74	60.26	0.66	* 68	3018	23845
Augusta	A6767	117	34.30	22.76	7.97	7.44	29.92	51.36	61.08	0.65	67	2956	23589
Chemgro	7798G3	117	30.87	21.86	7.65	7.79	28.75	50.41	61.62	0.67	* 69	* 3088	* 23512
Dupont Pioneer	P1184AMX	111	37.69	23.57	* 8.25	* 8.16	* 26.96	46.29	58.63	0.64	66	2865	23472
Chemgro	7647RVP	116	31.13	21.12	7.39	8.44	* 27.43	46.51	60.48	0.68	* 69	* 3145	* 23253
Augusta	A7768	118	31.46	22.09	7.74	7.69	29.70	49.80	60.50	0.66	* 67	2985	23057
T.A. Seeds	TA774-13VP	116	32.89	20.81	7.28	8.33	* 26.06	44.23	56.96	0.68	* 69	* 3163	* 23036
Hubner Seed	H6844RCSS	115	32.21	21.84	7.64	7.86	29.74	51.98	64.11	* 0.65	68	2984	22811
Augusta	A5363	113	33.57	21.14	7.40	8.05	* 28.03	46.48	60.05	0.67	* 69	* 3084	* 22810
Mid-Atlantic Seeds	MA8150VT3PRO	115	31.66	21.49	7.52	8.48	* 26.80	49.22	61.97	0.68	* 70	* 3144	* 22789
Masters Choice	MCT 6753 3000GT	117	33.11	20.60	7.21	8.13	* 27.67	46.59	59.82	0.67	* 69	* 3110	* 22695
Dyna-Gro	D55GT73	115	33.83	20.69	7.24	8.09	* 27.67	47.25	61.25	0.68	* 69	* 3124	* 22587
Doebler	RPM® 604HRQ™	108	35.00	21.20	7.42	7.72	28.56	47.49	61.96	0.66	* 68	3041	22579
Mid-Atlantic Seeds	MA7161HXRR2	116	33.07	21.72	7.60	7.13	30.65	* 51.74	61.62	0.65	67	2965	22488
Mid-Atlantic Seeds	MA8111VT3PRO	111	32.59	20.44	7.16	7.60	29.50	50.33	58.82	0.65	67	2960	21216
Dupont Pioneer	P1690AM	116	33.37	20.16	7.06	7.55	30.60	* 49.87	59.83	0.65	67	2951	20896
Augusta	A6866	116	31.83	19.52	6.83	7.98	* 28.82	49.49	60.31	0.66	* 68	3034	20846
Augusta	A7767	117	32.36	19.37	6.78	8.13	* 27.96	49.33	59.82	0.66	* 68	3027	20433

Table 6, cont'd. 2013 Corn Silage Test Results at the Shenandoah Valley Site

Brand	Hybrid	DTM ¹	DM at Harvest	Yield at 35% DM	DM Yield	Crude Protein	ADF	NDF	NDF Digest.	NE _L	TDN	Milk2006	Milk2006
		--Days--	%	ton/acre	ton/acre	-----%				Mcal/lb	%	lb milk/ton	lb milk/acre
Dupont Pioneer	P1449XR	114	34.90	17.23	6.03	8.29 *	26.29	46.46	65.85 *	0.68 *	71 *	3204 *	19643
Augusta	A6665	115	34.61	17.73	6.21	7.42	29.40	49.71	59.05	0.64	66	2908	18087
Hubner Seed	H5420RC3P	110	30.94	18.01	6.30	7.10	31.84 *	52.92 *	58.32	0.64	65	2852	18076
Dyna-Gro	D57VP75	117	30.60	14.10	4.93	6.97	31.13 *	53.48 *	60.91	0.65	67	2934	14796
	Site Average		33.16	23.51	8.23	7.90	28.40	48.26	60.20	0.66	68	3037	25031
	LSD (0.10)		2.67	5.56	1.95	0.77	2.83	4.70	2.78	0.03	3	196	6268
	C.V.		6.50	18.72	18.71	7.71	7.93	7.75	3.67	3.65	3	5	19

¹Days to maturity provided by company; differences in maturity rating methods may exist between companies.

* Indicates numbers not significantly different from the highest (or lowest for ADF and NDF) value in that column, i.e. within one LSD of the top performer.

Table 7. Two-Year Average Corn Silage Test Results (2012 & 2013) at the Shenandoah Valley Site

Brand	Hybrid	DTM ¹	DM at Harvest	Yield at 35% DM	DM Yield	Crude Protein	ADF	NDF	NDF Digest.	NE _L	TDN	Milk2006	Milk2006
		--Days--	%	ton/acre	ton/acre	-----%				Mcal/lb	%	lb milk/ton	lb milk/acre
Channel	214-14VT3PRIB Brand	114	35.64	29.20	* 10.22	* 7.77	* 26.95	45.26	58.79	0.66	68	3012	30757
Doeblers	RPM® 688AMX™	113	33.51	25.91	* 9.07	* 7.26	27.19	45.52	58.76	0.67	* 69	* 3102	* 28356
Seed Consultants	SCS 11HQ39™	112	34.70	26.16	* 9.16	* 7.72	27.14	45.03	59.72	0.67	* 69	3072	28137
Mid-Atlantic Seeds	MA8157VT3PRO	115	32.48	25.03	* 8.76	* 7.43	27.03	46.55	* 60.68	* 0.69	* 70	* 3195	* 27940
Channel	218-73VT3PRIB Brand	118	32.09	24.50	8.57	7.51	27.32	46.02	* 59.34	0.69	* 71	* 3237	* 27660
Seed Consultants	SCS 11HR63™	115	34.81	26.22	* 9.18	* 7.14	29.41	* 47.74	* 59.50	0.65	67	2983	27389
Augusta	A5565	115	35.99	26.38	* 9.23	* 8.24	* 26.77	45.69	* 56.37	0.64	66	2906	26617
Augusta	A6867	117	34.41	23.68	8.29	7.94	* 26.48	44.40	60.78	* 0.69	* 70	* 3189	* 26437
Augusta	A5462A	112	34.43	24.79	8.68	6.96	28.12	* 47.44	* 58.73	0.66	68	3043	26328
Augusta	A5461	112	35.86	23.35	8.17	7.59	27.63	* 45.63	* 60.17	* 0.65	68	2982	24370
Doeblers	RPM® 743HXR™	116	34.43	22.56	7.90	7.62	28.04	* 46.71	* 60.02	0.67	* 68	3068	24335
Mid-Atlantic Seeds	MAX8151VT3PRO	115	32.25	21.94	7.68	7.63	26.64	45.34	60.08	0.68	* 70	* 3158	* 24237
Mid-Atlantic Seeds	MA7161HXRR2	116	33.73	22.39	7.84	6.90	29.35	* 48.92	* 60.80	* 0.66	68	3049	23932
Augusta	A5363	113	35.00	22.21	7.78	7.52	27.01	45.55	60.42	* 0.67	* 69	* 3085	23916
Seed Consultants	SCS 11HR21™	111	34.56	21.37	7.48	7.47	27.82	* 46.40	* 62.17	* 0.67	* 70	* 3133	* 23463
Dupont Pioneer	P1184AMX	111	38.35	23.50	8.22	7.89	* 26.62	44.97	58.13	0.64	66	2866	23427
Seed Consultants	SC 11AQ72™	117	33.64	21.14	7.40	7.75	* 27.53	* 45.87	* 59.47	0.67	* 69	* 3129	* 22998
Masters Choice	MCT 6753 3000GT	117	33.52	20.63	7.22	7.66	27.19	45.58	59.19	0.68	* 69	* 3150	* 22932
Chemgro	7747RVP	117	31.00	20.64	7.23	7.95	* 26.60	47.54	* 60.48	* 0.69	* 70	* 3190	* 22759
Dupont Pioneer	P1498CHR	114	35.26	21.07	7.37	7.80	* 27.05	44.97	60.07	0.66	68	3054	22743
Mid-Atlantic Seeds	MA8150VT3PRO	115	32.87	19.04	6.66	7.88	* 26.40	46.28	* 61.25	* 0.69	* 70	* 3203	* 20661
Dupont Pioneer	P0912AM	109	36.98	19.47	6.82	7.23	27.98	* 46.50	* 60.28	* 0.64	67	2921	19819
	Site Average		34.34	23.24	8.13	7.58	27.38	46.09	59.78	0.67	69	3079	24964
	LSD (0.10)		2.13	4.22	1.48	0.51	1.95	3.32	2.04	0.02	2	145	4759
	C.V.		6.47	18.90	18.90	7.02	7.35	7.44	3.53	3.59	3	5	20

¹Days to maturity provided by company; differences in maturity rating methods may exist between companies.

* Indicates numbers not significantly different from the highest (or lowest for ADF and NDF) value in that column, i.e. within one LSD of the top performer.

Table 8. Three-Year Average Corn Silage Test Results (2011, 2012 & 2013) at the Shenandoah Valley Site

Brand	Hybrid	DTM ¹	DM at Harvest	Yield at 35% DM	DM Yield	Crude Protein	ADF	NDF	NDF Digest.	NE _L	TDN	Milk2006	Milk2006
		--Days--	%	ton/acre	ton/acre	-----%				Mcal/lb	%	lb milk/ton	lb milk/acre
Seed Consultants	SCS 11HQ39™	112	34.02	23.95 *	8.38 *	7.69 *	28.29	48.13	61.83 *	0.68 *	71 *	3203 *	26721 *
Seed Consultants	SCS 11HR63™	115	33.59	24.05 *	8.42 *	6.98	30.84 *	50.95 *	61.34 *	0.67 *	70	3085	25847 *
Augusta	A5462A	112	33.71	23.35 *	8.17 *	7.00	29.12	48.83 *	60.02	0.68 *	70	3147	25529 *
Seed Consultants	SCS 11HR21™	111	33.65	21.54 *	7.54 *	7.55 *	27.94	47.14	62.69 *	0.69 *	72 *	3268 *	24649 *
Mid-Atlantic Seeds	MA7161HXRR2	116	33.30	22.23 *	7.78 *	7.04	29.80 *	50.31 *	62.75 *	0.68 *	71 *	3169 *	24611 *
Augusta	A5461	112	34.78	22.51 *	7.88 *	7.54 *	28.58	47.62	60.11	0.66	69	3076	24098 *
Dupont Pioneer	P1184AMX	111	36.77	23.14 *	8.10 *	7.75 *	28.62	48.82 *	59.98	0.66	69	3015	23872 *
Seed Consultants	SC 11AQ72™	117	32.86	20.78 *	7.27 *	7.76 *	29.17	49.16 *	61.42 *	0.68 *	71 *	3216 *	23228 *
Mid-Atlantic Seeds	MAX8151VT3PRO	115	30.98	20.44 *	7.15 *	7.87 *	28.23	48.88 *	61.69 *	0.69 *	72 *	3252 *	23190 *
	Site Average		33.74	22.44	7.85	7.46	28.95	48.87	61.31	0.68	70	3159	24638
	LSD (0.10)		1.48	3.71	1.30	0.40	1.51	2.68	2.46	0.02	2	120	4246
	C.V.		5.91	22.19	7.84	7.15	7.05	7.41	5.41	3.60	3	5	23

¹Days to maturity provided by company; differences in maturity rating methods may exist between companies.

* Indicates numbers not significantly different from the highest (or lowest for ADF and NDF) value in that column, i.e. within one LSD of the top performer.

Table 9. 2013 Corn Silage Test Results at the Northern Piedmont Site

Brand	Hybrid	DTM ¹	DM at Harvest	Yield at 35% DM	DM Yield	Crude Protein	ADF	NDF	NDF Digest.	NE _L	TDN	Milk2006	Milk2006	
		--Days--	%	ton/acre	ton/acre	-----%				Mcal/lb	%	lb milk/ton	lb milk/acre	
Doeblers	RPM® 657AM™	112	31.85	25.57	* 8.95	* 7.76	26.76	46.07	61.15	0.69	* 70	3197	28677	*
Channel	218-73VT3PRIB Brand	118	34.02	25.54	* 8.94	* 7.76	25.69	44.73	57.18	0.68	68	3098	27730	*
Dupont Pioneer	P2088YXR	120	31.09	24.11	* 8.44	* 8.04	* 26.59	44.84	61.08	0.70	* 71	* 3268	* 27697	*
Seed Consultants	SCS 11HQ33™	112	33.49	24.80	* 8.68	* 7.84	26.13	44.56	59.19	0.69	* 70	3182	27577	*
Augusta	A5462A	112	33.06	25.27	* 8.84	* 7.34	27.97	45.61	57.90	0.68	69	3105	27486	*
Doeblers	RPM® 743HXR™	116	32.06	24.18	* 8.46	* 7.90	26.51	45.35	60.55	0.69	* 71	3238	* 27385	*
Seed Consultants	SCS 1131AM-R™	112	32.25	24.02	* 8.41	* 8.15	* 26.28	43.76	60.23	0.69	* 70	3228	* 27186	*
Healthy Herd Genetic	87HFC14	117	28.58	26.04	* 9.11	* 7.28	30.62	* 52.32	* 62.29	* 0.65	67	2957	26932	*
Seed Consultants	SCS 1154AM-R™	114	31.24	24.26	* 8.49	* 8.28	* 26.95	47.41	60.72	0.67	69	3122	26554	*
T.A. Seeds	TA765-30	115	32.15	24.33	* 8.52	* 7.89	26.36	44.65	61.74	0.67	69	3125	26328	*
Dyna-Gro	D55GT73	115	30.78	22.96	8.04	* 7.95	26.97	46.10	61.63	0.69	* 71	3238	* 26025	*
Dupont Pioneer	P0912AM	109	33.38	24.11	* 8.44	* 7.86	26.82	46.45	58.67	0.67	68	3070	25955	*
Seed Consultants	SCS 1184AM-R™	117	29.00	23.17	* 8.11	* 7.62	27.12	46.68	59.29	0.68	70	3175	25828	*
Augusta	A6767	117	34.39	23.38	* 8.19	* 7.70	27.22	45.04	61.49	0.68	70	3147	25748	*
Doeblers	RPM® 688AMX™	113	33.06	23.12	* 8.10	* 8.11	* 25.63	44.62	60.23	0.69	* 70	3187	25713	*
Augusta	A5262	112	34.28	23.40	* 8.19	* 7.69	26.30	43.12	56.55	0.68	69	3115	25506	*
Seed Consultants	SCS 11HR21™	111	31.88	22.25	7.79	7.74	26.39	43.96	60.52	0.70	* 71	3258	* 25364	*
Seed Consultants	SCS 11HR63™	115	32.74	23.67	* 8.29	* 7.37	27.95	49.21	60.51	0.67	68	3066	25358	*
Dyna-Gro	D59HR50	119	29.35	22.90	8.02	7.54	27.69	48.47	62.63	* 0.68	70	3154	25292	*
Hubner Seed	H5420RC3P	110	32.69	22.37	7.83	7.82	26.35	43.62	58.20	0.69	* 70	3214	25206	
Dupont Pioneer	P1690AM	116	30.83	22.30	7.80	7.46	27.67	45.52	59.94	0.69	* 70	3235	* 25198	
T.A. Seeds	TA753-22DP	115	32.66	22.61	7.92	7.54	26.41	44.06	56.94	0.69	* 69	3172	25141	
Dupont Pioneer	P1498CHR	114	31.88	22.50	7.88	7.39	28.09	46.64	59.57	0.68	70	3164	24929	
T.A. Seeds	TA774-13VP	116	31.59	22.13	7.75	7.98	26.37	44.40	57.99	0.69	* 70	3199	24733	
Augusta	A5465	115	32.13	22.05	7.72	8.13	* 27.08	45.02	60.10	0.69	* 70	3181	24544	
Seed Consultants	SCS 11HQ39™	112	32.67	21.63	7.57	7.92	25.93	44.67	59.97	0.69	* 70	3238	* 24542	
Augusta	A6866	116	32.20	21.38	7.48	7.87	26.50	45.22	60.96	0.70	* 71	* 3276	* 24524	
T.A. Seeds	TA683-22DP	112	33.06	22.04	7.71	8.07	* 26.41	44.49	59.65	0.68	70	3175	24467	
Healthy Herd Genetic	86HFC13	116	30.73	23.84	* 8.34	* 7.06	30.71	* 51.84	* 60.50	0.64	67	2922	24383	
Augusta	A6665	115	31.79	22.21	7.77	7.88	26.50	44.46	57.15	0.68	69	3146	24366	

Table 9, cont'd. 2013 Corn Silage Test Results at the Northern Piedmont Site

Brand	Hybrid	DTM ¹	DM at Harvest	Yield at 35% DM	DM Yield	Crude Protein	ADF	NDF	NDF Digest.	NE _L	TDN	Milk2006	Milk2006
		--Days--	%	ton/acre	ton/acre	-----%				Mcal/lb	%	lb milk/ton	lb milk/acre
Dupont Pioneer	P1449XR	114	30.40	20.76	7.27	7.97	26.57	45.62	64.27 *	0.71 *	72 *	3351 *	24330
Dyna-Gro	D57VP75	117	28.54	22.76	7.96	7.47	27.80	49.56 *	60.60	0.66	68	3053	24277
Augusta	A7768	118	29.68	21.67	7.58	8.02 *	26.59	47.26	60.57	0.68	70	3175	24107
Hubner Seed	H6844RCSS	115	30.10	21.82	7.64	7.95	26.72	46.14	58.67	0.68	69	3149	24041
Seed Consultants	SC 11AQ43™	113	30.60	22.55	7.90	7.24	29.78 *	50.12 *	60.76	0.66	68	3041	23996
Doebler's	698GRQ	114	31.47	21.74	7.61	7.82	27.64	48.49	62.95 *	0.68	70	3150	23974
Channel	215-82VT3PRIB Brand	115	33.76	22.00	7.70	7.75	26.41	44.75	59.44	0.67	69	3114	23968
Augusta	A5565	115	34.66	22.90	8.02	7.76	25.90	44.13	56.76	0.66	67	3003	23803
Masters Choice	MCT 6583 3000GT	115	31.46	21.72	7.60	7.68	27.22	48.21	61.75	0.68	69	3131	23802
Dupont Pioneer	P1184AMX	111	34.74	21.79	7.63	8.29 *	25.47	43.76	58.33	0.68	69	3113	23740
Dupont Pioneer	P1105YHR	110	31.67	20.65	7.23	7.88	26.46	43.02	59.90	0.70 *	71 *	3282 *	23707
Healthy Herd Genetic	87A12	117	29.62	22.82	7.98	6.78	30.33 *	51.84 *	61.88	0.65	67	2949	23678
Dupont Pioneer	P1319HR	113	31.93	21.27	7.45	8.13 *	26.54	44.96	60.30	0.68	70	3170	23586
Doebler's	RPM® 765YHR™	117	31.83	21.10	7.39	8.45 *	26.27	45.59	60.74	0.68	70	3182	23522
Doebler's	RPM® 604HRQ™	108	33.50	20.88	7.31	7.87	26.96	43.69	59.67	0.69 *	70	3212	23445
Augusta	A7767	117	31.04	20.67	7.24	7.88	26.21	43.91	57.17	0.70 *	70	3226 *	23347
Channel	214-14VT3PRIB Brand	114	34.75	21.32	7.46	7.78	25.54	42.62	55.56	0.68	69	3123	23283
Hubner Seed	H5867RC3P	115	31.08	20.70	7.25	7.48	26.90	46.25	58.38	0.69 *	69	3165	22858
Seed Consultants	SC 11AQ72™	117	32.69	20.83	7.29	7.71	27.65	47.58	62.15 *	0.67	69	3103	22588
Masters Choice	MCT 6753 3000GT	117	31.02	20.16	7.06	7.70	27.20	46.42	60.96	0.68	70	3167	22383
T.A. Seeds	TA744-22DP	114	30.64	19.39	6.78	8.22 *	26.08	44.82	59.26	0.69 *	70	3195	21698
	Site Average		31.88	22.58	7.90	7.78	26.98	45.91	59.89	0.68	69	3155	24912
	LSD (0.10)		2.84	3.05	1.07	0.43	1.38	3.01	2.23	0.02	2	133	3418
	C.V.		7.55	11.34	11.34	4.64	4.33	5.56	3.15	2.66	2	4	12

¹Days to maturity provided by company; differences in maturity rating methods may exist between companies.

* Indicates numbers not significantly different from the highest (or lowest for ADF and NDF) value in that column, i.e. within one LSD of the top performer.

Table 10. Two-Year Average Corn Silage Test Results (2012 & 2013) at the Northern Piedmont Site

Brand	Hybrid	DTM ¹	DM at Harvest	Yield at 35% DM	DM Yield	Crude Protein	ADF	NDF	NDF Digest.	NE _L	TDN	Milk2006	Milk2006
		--Days--	%	ton/acre	ton/acre	-----%				Mcal/lb	%	lb milk/ton	lb milk/acre
Augusta	A5462A	112	29.14	20.66 *	7.23 *	7.44	29.14 *	49.49	59.74	0.67 *	69	3072	22273 *
Channel	218-73VT3PRIB Brand	118	28.92	20.11 *	7.04 *	7.94	27.30	48.42	58.26	0.67 *	68	3062	21684 *
Doebler's	RPM® 743HXR™	116	26.53	19.20 *	6.72 *	8.15 *	28.47 *	49.95 *	61.55 *	0.67 *	69 *	3095 *	21056 *
Seed Consultants	SCS 11HR21™	111	27.72	18.61	6.52	7.84	27.32	47.77	61.90 *	0.68 *	71 *	3199 *	20906 *
Doebler's	RPM® 688AMX™	113	28.16	18.80	6.58	8.22 *	27.16	49.41	61.66 *	0.67 *	69 *	3105 *	20532 *
Seed Consultants	SCS 11HR63™	115	27.95	19.33 *	6.77 *	7.53	29.26 *	52.08 *	60.82 *	0.66 *	68	3013	20470 *
Dupont Pioneer	P1498CHR	114	27.62	18.65	6.53	7.69	28.79 *	48.90	60.41 *	0.67 *	69 *	3122 *	20439 *
Dupont Pioneer	P1184AMX	111	29.98	18.55	6.49	8.27 *	26.97	47.16	60.19 *	0.68 *	69 *	3126 *	20285 *
Seed Consultants	SCS 11HQ39™	112	27.76	17.95	6.28	8.04 *	27.00	48.02	60.40 *	0.68 *	70 *	3155 *	19948
Dupont Pioneer	P0912AM	109	28.01	18.77	6.57	7.94	28.55 *	49.81 *	59.31	0.66 *	68	2991	19910
Augusta	A5565	115	29.17	18.98 *	6.64 *	7.98 *	27.51	47.85	57.73	0.66 *	67	3002	19844
Channel	214-14VT3PRIB Brand	114	29.00	17.99	6.29	7.92	26.99	46.03	57.87	0.67 *	69 *	3122 *	19676
Seed Consultants	SC 11AQ72™	117	28.33	17.70	6.19	8.06 *	28.27 *	49.77 *	61.88 *	0.67 *	69	3077	19066
Masters Choice	MCT 6753 3000GT	117	27.35	17.30	6.05	7.87	28.79 *	50.77 *	61.92 *	0.67 *	69 *	3083	18754
	Site Average		28.26	18.76	6.56	7.92	27.97	48.96	60.26	0.67	69	3087	20346
	LSD (0.10)		1.83	1.79	0.63	0.31	1.07	2.34	1.84	0.02	1	108	2058
	C.V.		7.68	11.29	11.30	4.72	4.53	5.68	3.64	2.96	2	4	12

¹Days to maturity provided by company; differences in maturity rating methods may exist between companies.

* Indicates numbers not significantly different from the highest (or lowest for ADF and NDF) value in that column, i.e. within one LSD of the top performer.

Table 11. Three-Year Average Corn Silage Test Results (2011, 2012 & 2013) at the Northern Piedmont Site

Brand	Hybrid	DTM ¹	DM at Harvest	Yield at 35% DM	DM Yield	Crude Protein	ADF	NDF	NDF Digest.	NE _L	TDN	Milk2006	Milk2006
		--Days--	%	ton/acre	ton/acre	-----%				Mcal/lb	%	lb milk/ton	lb milk/acre
Augusta	A5462A	112	30.07	21.05 *	7.37 *	7.37	29.52 *	49.70 *	60.64	0.68 *	70	3163	23379 *
Seed Consultants	SCS 11HR63™	115	29.11	20.91 *	7.32 *	7.48	29.29 *	51.06 *	61.02	0.67	70	3124	23052 *
Dupont Pioneer	P1184AMX	111	31.30	19.43	6.80	8.08 *	27.59	47.37	61.21	0.68 *	71 *	3204 *	21863 *
Seed Consultants	SCS 11HR21™	111	29.23	19.52	6.83	7.80	27.53	47.51	62.12 *	0.69 *	71 *	3235 *	21658
Seed Consultants	SCS 11HQ39™	112	28.99	19.27	6.75	7.94 *	27.36	47.62	61.01	0.69 *	71 *	3224 *	21533
Seed Consultants	SC 11AQ72™	117	29.90	18.43	6.45	8.08 *	28.28	50.06 *	62.87 *	0.67	71 *	3158	20451
	Site Average		29.77	19.77	6.92	7.79	28.26	48.89	61.48	0.68	71	3185	21989
	LSD (0.10)		1.35	1.42	0.50	0.24	0.85	1.72	1.20	0.01	1	61	1652
	C.V.		6.28	9.91	9.92	4.09	4.08	4.76	2.65	1.88	1	3	10

¹Days to maturity provided by company; differences in maturity rating methods may exist between companies.

* Indicates numbers not significantly different from the highest (or lowest for ADF and NDF) value in that column, i.e. within one LSD of the top performer.

Table 12. 2013 Corn Silage Test Results at the Southern Piedmont Site

Brand	Hybrid	DTM ¹	DM at Harvest	Yield at 35% DM	DM Yield	Crude Protein	ADF	NDF	NDF Digest.	NE _L	TDN	Milk2006	Milk2006
		--Days--	%	ton/acre	ton/acre	-----%				Mcal/lb	%	lb milk/ton	lb milk/acre
Doeblers	RPM® 743HXR™	116	34.92	27.51	* 9.63	* 6.76	28.05	48.54	67.80	* 0.67	* 71	* 3152	* 30297
Dupont Pioneer	P2088YXR	120	33.01	26.62	* 9.32	* 6.20	29.15	* 51.26	* 68.85	* 0.68	* 71	* 3198	* 29834
Seed Consultants	SCS 11HR21™	111	35.10	27.51	* 9.63	* 6.58	26.73	49.45	65.95	* 0.66	69	* 3079	* 29584
Channel	218-73VT3PRIB Brand	118	34.93	26.89	* 9.41	* 6.95	27.29	49.02	66.79	* 0.67	* 70	* 3120	* 29461
Seed Consultants	SCS 1131AM-R™	112	33.70	27.30	* 9.56	* 6.61	28.51	50.97	* 65.73	* 0.67	* 69	* 3072	* 29347
Seed Consultants	SC 11AQ72™	117	33.69	26.62	* 9.32	* 6.92	28.33	49.77	65.56	0.67	* 70	* 3105	* 28963
T.A. Seeds	TA765-30	115	31.24	26.26	* 9.19	* 6.96	28.25	50.16	* 64.00	0.67	* 70	* 3117	* 28624
Doeblers	RPM® 688AMX™	113	33.20	25.11	* 8.79	* 6.78	28.71	* 50.87	* 69.36	* 0.68	* 72	* 3210	* 28173
Dupont Pioneer	P1105YHR	110	32.39	24.85	* 8.70	* 6.90	28.56	49.89	67.88	* 0.68	* 71	* 3225	* 28098
Dyna-Gro	D57VP75	117	32.71	24.99	* 8.75	* 6.98	30.31	* 50.50	* 67.15	* 0.67	* 70	* 3129	* 27384
Seed Consultants	SCS 11HR63™	115	33.88	25.79	* 9.03	* 6.50	29.74	* 51.32	* 62.60	0.65	67	2964	26989
Dupont Pioneer	P1319HR	113	32.80	24.08	8.43	6.92	29.21	* 50.83	* 69.56	* 0.68	* 71	* 3198	* 26941
Masters Choice	MCT 6753 3000GT	117	34.72	24.84	* 8.70	* 7.19	* 29.20	* 48.94	* 66.37	* 0.67	* 70	* 3093	* 26898
Augusta	A6866	116	33.20	24.20	8.47	7.46	* 28.02	48.84	66.89	* 0.68	* 71	* 3161	* 26736
Dyna-Gro	D59HR50	119	30.31	24.83	* 8.69	* 6.42	29.82	* 51.00	* 62.27	0.67	* 69	3070	* 26729
Dupont Pioneer	P1498CHR	114	32.85	24.39	8.54	6.95	28.79	* 50.93	* 65.90	* 0.67	* 70	* 3118	* 26637
Augusta	A7768	118	32.92	23.96	8.39	6.61	29.15	* 49.68	67.10	* 0.68	* 71	* 3168	* 26598
Dupont Pioneer	P1449XR	114	31.59	23.88	8.36	7.88	* 27.96	49.60	69.21	* 0.68	* 71	* 3173	* 26518
Dupont Pioneer	P1690AM	116	35.87	24.74	* 8.66	* 6.44	28.89	* 48.76	66.66	* 0.66	69	3032	26244
Seed Consultants	SCS 1184AM-R™	117	33.61	24.20	8.47	6.51	29.30	* 52.13	* 67.36	* 0.67	* 70	* 3090	* 26215
Dyna-Gro	D55GT73	115	33.72	25.14	* 8.80	* 6.32	30.75	* 53.08	* 65.82	* 0.65	68	2981	26191
Doeblers	RPM® 765YHR™	117	34.22	24.06	8.42	6.80	29.80	* 48.63	66.22	* 0.67	* 70	* 3100	* 26150
Seed Consultants	SCS 11HQ39™	112	33.79	22.93	8.02	7.13	27.88	48.14	68.16	* 0.69	* 72	* 3229	* 25918
Dupont Pioneer	P0912AM	109	34.07	24.12	8.44	7.06	30.23	* 49.81	67.17	* 0.66	69	* 3051	25825
Doeblers	RPM® 657AM™	112	35.54	24.04	8.42	6.77	27.97	47.73	64.86	0.66	69	3068	* 25812
Hubner Seed	H5420RC3P	110	34.01	23.12	8.09	6.75	28.05	48.03	65.82	* 0.68	* 70	* 3171	* 25617
Doeblers	RPM® 604HRQ™	108	36.13	25.13	* 8.80	* 6.67	30.01	* 51.00	* 66.25	* 0.64	67	2898	25474
Doeblers	698GRQ	114	35.23	23.83	8.34	6.77	28.98	* 50.69	* 66.79	* 0.66	69	* 3048	25471
Hubner Seed	H5867RC3P	115	33.12	23.39	8.19	7.09	28.59	49.90	64.15	0.67	* 69	* 3100	* 25364
Seed Consultants	SCS 1154AM-R™	114	33.74	25.04	* 8.76	* 6.67	30.24	* 52.44	* 61.24	0.63	66	2858	25013

Table 12, cont'd. 2013 Corn Silage Test Results at the Southern Piedmont Site

Brand	Hybrid	DTM ¹	DM at Harvest	Yield at 35% DM	DM Yield	Crude Protein	ADF	NDF	NDF Digest.	NE _L	TDN	Milk2006	Milk2006
		--Days--	%	ton/acre	ton/acre	-----%				Mcal/lb	%	lb milk/ton	lb milk/acre
Hubner Seed	H6844RCSS	115	30.80	22.97	8.04	7.35	* 30.50	* 51.71	* 66.15	* 0.67	* 70	* 3105	* 24924
Seed Consultants	SCS 11HQ33™	112	35.07	23.64	8.28	7.01	28.98	* 49.68	64.30	0.65	68	2993	24734
Masters Choice	MCT 6583 3000GT	115	32.29	22.22	7.78	7.06	29.07	* 49.76	66.06	* 0.68	* 71	* 3172	* 24680
Augusta	A6767	117	34.96	23.90	8.36	7.63	* 27.78	48.35	63.33	0.65	67	2962	24650
T.A. Seeds	TA753-22DP	115	35.44	23.10	8.09	7.03	27.27	48.12	64.40	0.66	69	3046	24594
Dupont Pioneer	P1184AMX	111	34.85	22.31	7.81	6.86	27.46	48.92	66.59	* 0.67	* 70	* 3131	* 24398
Channel	214-14VT3PRIB Brand	114	33.21	21.81	7.64	7.22	* 28.02	46.99	62.26	0.68	* 70	* 3139	* 23981
Augusta	A5465	115	32.62	23.15	8.10	7.03	30.17	* 49.74	62.19	0.65	67	2962	23979
Seed Consultants	SC 11AQ43™	113	32.97	21.98	7.69	7.24	* 29.65	* 51.20	* 66.01	* 0.67	* 70	* 3112	* 23970
Augusta	A6665	115	35.25	22.51	7.88	7.43	* 27.80	47.15	63.50	0.66	68	3030	23853
T.A. Seeds	TA744-22DP	114	33.18	21.60	7.56	7.24	* 28.30	47.27	63.20	0.68	* 70	* 3145	* 23736
Augusta	A7767	117	30.71	21.00	7.35	7.03	30.26	* 48.57	64.24	0.68	* 71	* 3204	* 23531
T.A. Seeds	TA683-22DP	112	34.96	22.37	7.83	7.52	* 28.99	* 48.82	63.35	0.65	67	2949	23115
Augusta	A5262	112	32.33	21.80	7.63	6.93	29.76	* 49.16	62.40	0.66	68	3025	22997
Channel	215-82VT3PRIB Brand	115	35.74	21.96	7.69	6.61	29.53	* 49.37	64.20	0.65	68	2985	22952
T.A. Seeds	TA774-13VP	116	32.76	19.80	6.93	7.71	* 29.35	* 51.40	* 65.39	0.66	69	3048	21133
	Site Average		33.64	24.03	8.41	6.94	28.90	49.74	65.59	0.67	69	3087	25964
	LSD (0.10)		2.41	2.97	1.04	0.74	2.11	3.01	3.86	0.02	2	167	3496
	C.V.		6.12	10.55	10.55	9.14	6.24	5.17	5.03	3.14	3	5	11

¹Days to maturity provided by company; differences in maturity rating methods may exist between companies.

* Indicates numbers not significantly different from the highest (or lowest for ADF and NDF) value in that column, i.e. within one LSD of the top performer.

Table 13. Two-Year Average Corn Silage Test Results (2012 & 2013) at the Southern Piedmont Site

Brand	Hybrid	DTM ¹	DM at Harvest	Yield at 35% DM	DM Yield	Crude Protein	ADF	NDF	NDF Digest.	NE _L	TDN	Milk2006	Milk2006
		--Days--	%	ton/acre	ton/acre	-----%				Mcal/lb	%	lb milk/ton	lb milk/acre
Seed Consultants	SCS 11HR21™	111	30.77	17.04 *	5.96 *	8.32 *	29.41	51.21	61.01 *	0.64 *	66 *	2886 *	17886 *
Doebler's	RPM® 743HXR™	116	30.41	16.84 *	5.90 *	8.74 *	30.63	51.81	62.65 *	0.63 *	66 *	2838 *	17886 *
Channel	218-73VT3PRIB Brand	118	30.91	16.62 *	5.82 *	8.48 *	31.17	53.22 *	59.83 *	0.62 *	65 *	2778 *	17424 *
Seed Consultants	SC 11AQ72™	117	30.07	16.42 *	5.75 *	8.71 *	31.14	52.71 *	58.11	0.62 *	64	2738	17058 *
Doebler's	RPM® 688AMX™	113	30.38	15.68 *	5.49 *	8.52 *	31.33	53.86 *	62.88 *	0.64 *	67 *	2886 *	16887 *
Seed Consultants	SCS 11HQ39™	112	29.74	15.26	5.34	8.39 *	30.55	51.04	62.36 *	0.64 *	67 *	2926 *	16448 *
Dupont Pioneer	P1498CHR	114	29.70	15.48 *	5.42 *	8.64 *	30.28	52.02	59.56	0.64 *	66 *	2863 *	16293 *
Masters Choice	MCT 6753 3000GT	117	31.46	15.67 *	5.49 *	8.75 *	31.09	51.88	59.36	0.62 *	65 *	2790 *	16277 *
Seed Consultants	SCS 11HR63™	115	30.51	16.11 *	5.64 *	8.49 *	32.03 *	54.63 *	56.56	0.61	63	2659	16125 *
Dupont Pioneer	P0912AM	109	32.09	15.18	5.31	8.71 *	32.69 *	53.76 *	59.24	0.61	64	2700	15496
Dupont Pioneer	P1184AMX	111	30.67	14.33	5.02	8.78 *	30.08	51.64	59.91 *	0.62 *	65 *	2799 *	14949
Channel	214-14VT3PRIB Brand	114	29.77	13.83	4.84	8.76 *	30.92	51.88	57.79	0.63 *	65 *	2793 *	14500
	Site Average		30.54	15.71	5.50	8.61	30.94	52.47	59.94	0.63	65	2805	16436
	LSD (0.10)		1.50	1.56	0.55	0.53	1.32	2.13	3.09	0.02	2	159	1968
	C.V.		5.91	11.91	11.91	7.36	5.13	4.88	6.18	4.26	5	7	14

¹Days to maturity provided by company; differences in maturity rating methods may exist between companies.

* Indicates numbers not significantly different from the highest (or lowest for ADF and NDF) value in that column, i.e. within one LSD of the top performer.

Table 14. Three-Year Average Corn Silage Test Results (2011, 2012 & 2013) at the Southern Piedmont Site

Brand	Hybrid	DTM ¹	DM at Harvest	Yield at 35% DM	DM Yield	Crude Protein	ADF	NDF	NDF Digest.	NE _L	TDN	Milk2006	Milk2006
		--Days--	%	ton/acre	ton/acre	-----%				Mcal/lb	%	lb milk/ton	lb milk/acre
Seed Consultants	SCS 11HR21™	111	31.80	16.16 *	5.65 *	8.48 *	30.67	52.19	61.13 *	0.65 *	68 *	2999 *	17327 *
Seed Consultants	SC 11AQ72™	117	31.44	15.85 *	5.55 *	8.78 *	30.75	52.14	59.11	0.64 *	67	2919 *	17028 *
Seed Consultants	SCS 11HQ39™	112	32.24	15.49 *	5.42 *	8.36	31.09	51.77	61.92 *	0.65 *	68 *	2988 *	16753 *
Seed Consultants	SCS 11HR63™	115	32.43	15.95 *	5.58 *	8.48 *	32.41 *	55.28 *	58.31	0.62	66	2803	16396 *
Dupont Pioneer	P1184AMX	111	32.86	14.32	5.01	8.80 *	30.19	51.43	59.78	0.64 *	67	2907	15167
	Site Average		32.15	15.55	5.44	8.58	31.02	52.56	60.05	0.64	67	2923	16534
	LSD (0.10)		1.59	1.33	0.46	0.41	1.18	1.88	1.71	0.01	1	90	1540
	C.V.		7.16	12.36	12.35	7.00	5.53	5.20	4.12	3.00	3	4	14

¹Days to maturity provided by company; differences in maturity rating methods may exist between companies.

* Indicates numbers not significantly different from the highest (or lowest for ADF and NDF) value in that column, i.e. within one LSD of the top performer.

Table 15. 2013 Corn Silage Test Results at the Southwestern Virginia Site

Brand	Hybrid	DTM ¹	DM at Harvest	Yield at 35% DM	DM Yield	Crude Protein	ADF	NDF	NDF Digest.	NE _L	TDN	Milk2006	Milk2006
		--Days--	%	ton/acre	ton/acre	-----%				Mcal/lb	%	lb milk/ton	lb milk/acre
Seed Consultants	SCS 11HR63™	115	36.78	31.94 *	11.18 *	7.15 *	28.30	43.33	58.65	0.66 *	67 *	3008 *	33492 *
Doebler's	698GRQ	114	38.45	33.63 *	11.77 *	7.03	27.88	44.56	56.28	0.63	65	2814	33139 *
Seed Consultants	SC 11AQ72™	117	34.02	29.92 *	10.47 *	7.14 *	28.83	44.80	58.48	0.68 *	69 *	3144 *	33046 *
Dyna-Gro	D57VP75	117	33.37	29.74 *	10.41 *	6.89	28.89	46.35 *	58.45	0.68 *	69 *	3122 *	32584 *
Dupont Pioneer	P2088YXR	120	38.80	32.55 *	11.39 *	6.97	26.76	42.94	55.88	0.64	65	2866	32546 *
Dyna-Gro	D55GT73	115	37.25	31.32 *	10.97 *	6.42	28.16	43.54	55.82	0.66 *	67	2957 *	32445 *
T.A. Seeds	TA765-30	115	33.55	28.94 *	10.13 *	6.93	27.86	43.54	57.69	0.69 *	70 *	3197 *	32307 *
Seed Consultants	SCS 1154AM-R™	114	36.97	31.03 *	10.86 *	7.26 *	27.71	44.30	57.38	0.65 *	66	2939 *	31949 *
Seed Consultants	SCS 1184AM-R™	117	37.68	30.85 *	10.80 *	6.97	27.50	43.70	57.26	0.65 *	66	2930 *	31489 *
Augusta	A7768	118	33.84	29.70 *	10.40 *	6.71	29.40 *	47.11 *	59.08	0.66 *	68 *	3020 *	31063 *
Dupont Pioneer	P1449XR	114	33.01	27.79	9.73	7.21 *	27.75	45.91 *	64.01 *	0.68 *	70 *	3194 *	30840 *
Seed Consultants	SC 11AQ43™	113	39.35	31.16 *	10.91 *	7.13	27.64	43.50	57.06	0.63	65	2807	30628 *
Augusta	A6866	116	38.03	29.76 *	10.42 *	7.18 *	27.19	42.92	58.00	0.65 *	67	2942 *	30587 *
Augusta	A5262	112	38.46	30.27 *	10.59 *	7.12	27.92	43.43	57.06	0.64	65	2865	30424 *
NK	N79Z 3000GT Brand	114	35.30	27.92	9.77	7.42 *	27.97	43.40	57.78	0.68 *	68 *	3093 *	30180 *
Augusta	A5461	112	40.14	31.84 *	11.14 *	6.61	27.62	42.98	54.54	0.61	63	2712	30159 *
Hubner Seed	H6844RCSS	115	33.30	27.61	9.67	7.24 *	27.89	44.29	54.30	0.67 *	68 *	3074 *	29720 *
Channel	218-73VT3PRIB Brand	118	34.69	27.35	9.57	7.08	27.80	43.45	56.39	0.68 *	68 *	3100 *	29645 *
Dupont Pioneer	P0912AM	109	39.85	31.03 *	10.86 *	6.73	29.06 *	45.45	57.42	0.62	64	2732	29636 *
Dyna-Gro	D59HR50	119	30.51	27.43	9.60	6.78	31.03 *	48.76 *	60.00	0.67 *	69 *	3082 *	29576 *
Dupont Pioneer	P1690AM	116	36.62	28.69 *	10.04 *	6.67	28.85	46.05 *	57.65	0.65 *	66	2907	28991 *
Channel	215-82VT3PRIB Brand	115	35.13	27.16	9.51	6.86	29.07 *	43.93	60.38	0.67 *	69 *	3079 *	28868 *
Seed Consultants	SCS 1131AM-R™	112	34.84	27.61	9.66	7.23 *	28.85	44.87	57.24	0.66 *	67 *	2990 *	28803 *
Augusta	A6767	117	39.79	29.08 *	10.18 *	6.83	28.19	43.78	57.04	0.63	65	2798	28575
Hubner Seed	H5420RC3P	110	36.47	28.11	9.84	6.79	29.23 *	46.64 *	57.08	0.64	66	2898	28547
Dupont Pioneer	P1498CHR	114	36.78	27.43	9.60	7.21 *	28.27	43.82	58.99	0.65 *	67 *	2979 *	28484
NK	N74R 3000GT Brand	113	40.03	29.18 *	10.21 *	6.49	27.82	44.44	56.55	0.62	64	2764	28423
Augusta	A5465	115	37.82	27.61	9.67	6.75	28.63	44.14	59.29	0.65 *	67 *	2957 *	28401
Doebler's	RPM® 743HXR™	116	37.07	27.86	9.75	6.54	28.86	45.20	57.81	0.65 *	66	2922	28311
Seed Consultants	SCS 11HQ39™	112	38.18	27.69	9.69	6.94	28.20	44.70	59.01	0.64	66	2904	27906

Table 15, cont'd. 2013 Corn Silage Test Results at the Southwestern Virginia Site

Brand	Hybrid	DTM ¹	DM at Harvest	Yield at 35% DM	DM Yield	Crude Protein	ADF	NDF	NDF Digest.	NE _L	TDN	Milk2006	Milk2006
		--Days--	%	ton/acre	ton/acre	-----%				Mcal/lb	%	lb milk/ton	lb milk/acre
Augusta	A7767	117	33.55	25.81	9.03	6.95	28.17	43.63	54.00	0.68 *	68 *	3082 *	27757
Doebler's	RPM® 657AM™	112	40.08	27.74	9.71	6.86	27.21	42.60	57.82	0.64	65	2842	27638
Doebler's	RPM® 765YHR™	117	37.66	27.55	9.64	7.51 *	26.98	43.50	55.91	0.64	65	2858	27635
T.A. Seeds	TA753-22DP	115	38.47	26.64	9.33	6.22	27.67	42.40	54.40	0.65 *	66	2926	27558
Augusta	A6665	115	39.14	27.12	9.49	6.63	29.87 *	46.00 *	59.27	0.63	65	2841	26955
Dupont Pioneer	P1319HR	113	34.34	25.98	9.09	6.71	30.43 *	49.16 *	60.60	0.65 *	67 *	2954 *	26947
T.A. Seeds	TA774-13VP	116	31.61	24.22	8.48	6.72	28.64	44.12	55.90	0.69 *	69 *	3179 *	26922
T.A. Seeds	TA744-22DP	114	35.13	24.89	8.71	6.99	28.51	44.67	54.85	0.66 *	67 *	3018 *	26247
Seed Consultants	SCS 11HQ33™	112	40.12	26.45	9.26	7.04	27.83	43.58	59.20	0.63	65	2833	26113
Doebler's	RPM® 688AMX™	113	38.01	26.18	9.16	7.05	27.34	43.68	55.92	0.64	66	2882	26104
T.A. Seeds	TA683-22DP	112	37.93	25.17	8.81	6.63	29.12 *	43.67	57.38	0.65 *	66	2926	25594
Channel	214-14VT3PRIB Brand	114	37.67	25.37	8.88	6.80	28.49	44.93	56.24	0.64	66	2895	25555
Dupont Pioneer	P1105YHR	110	34.39	23.91	8.37	7.48 *	29.04 *	43.92	57.03	0.67 *	68 *	3051 *	25535
Doebler's	RPM® 604HRQ™	108	37.36	24.39	8.53	6.79	28.13	42.28	58.84	0.66 *	67 *	3006 *	25482
Dupont Pioneer	P1184AMX	111	35.03	23.49	8.22	7.24 *	28.18	44.37	59.46	0.67 *	68 *	3049 *	24996
Hubner Seed	H5867RC3P	115	37.36	24.92	8.72	6.83	29.72 *	47.18 *	57.73	0.64	65	2846	24872
Seed Consultants	SCS 11HR21™	111	33.98	20.06	7.02	7.72 *	29.89 *	47.08 *	57.08	0.65 *	66	2934 *	20801
	Site Average		36.55	27.92	9.77	6.95	28.39	44.52	57.54	0.65	67	2956	28797
	LSD (0.10)		4.24	4.96	1.73	0.58	2.12	3.55	2.96	0.04	4	270	4772
	C.V.		9.20	14.09	14.09	6.63	5.90	6.30	4.06	4.88	4	7	13

¹Days to maturity provided by company; differences in maturity rating methods may exist between companies.

* Indicates numbers not significantly different from the highest (or lowest for ADF and NDF) value in that column, i.e. within one LSD of the top performer.

Table 16. Two-Year Average Corn Silage Test Results (2012 & 2013) at the Southwest Virginia Site

Brand	Hybrid	DTM ¹	DM at Harvest	Yield at 35% DM	DM Yield	Crude Protein	ADF	NDF	NDF Digest.	NE _L	TDN	Milk2006	Milk2006
		--Days--	%	ton/acre	ton/acre	-----%				Mcal/lb	%	lb milk/ton	lb milk/acre
Seed Consultants	SCS 11HR63™	115	36.77	30.11	* 10.54	* 7.38	* 28.27	44.27	57.20	* 0.66	* 67	* 2983	* 31422
Seed Consultants	SCS 11HQ39™	112	35.55	28.55	* 9.99	* 7.33	* 28.32	* 44.50	58.03	* 0.67	* 68	* 3052	* 30422
Augusta	A5461	112	38.32	29.07	* 10.17	* 7.09	27.50	42.93	55.06	0.64	66	2886	29221
Seed Consultants	SC 11AQ72™	117	35.06	26.35	9.22	7.62	* 28.00	44.60	57.37	* 0.67	* 68	* 3086	* 28584
Dupont Pioneer	P0912AM	109	36.63	27.96	* 9.79	* 7.27	* 29.78	* 47.29	* 56.91	* 0.64	65	2849	27728
Doebler's	RPM® 743HXR™	116	36.64	25.96	9.09	7.12	27.96	44.14	56.42	* 0.66	* 67	* 2990	* 27068
Channel	214-14VT3PRIB Brand	114	37.58	25.95	9.08	7.21	27.05	43.46	54.27	0.65	* 66	2920	26384
Channel	218-73VT3PRIB Brand	118	36.59	24.82	8.69	7.34	* 26.82	42.97	55.20	0.67	* 67	* 3028	* 26369
Dupont Pioneer	P1498CHR	114	36.41	24.18	8.46	7.42	* 27.68	43.63	56.70	* 0.66	* 67	* 3011	* 25381
Seed Consultants	SCS 11HR21™	111	35.52	24.04	8.42	7.64	* 28.76	* 45.29	* 56.23	* 0.65	* 67	* 2977	* 25170
NK	N74R 3000GT Brand	113	37.94	23.57	8.25	6.91	27.61	43.87	55.36	0.64	66	2912	24000
Doebler's	RPM® 688AMX™	113	38.38	22.31	7.81	7.23	27.25	43.43	54.35	0.64	66	2885	22451
Dupont Pioneer	P1184AMX	111	36.02	21.21	7.43	7.52	* 27.95	44.07	57.21	* 0.66	* 67	* 3006	* 22270
	Site Average		36.72	25.70	9.00	7.31	27.92	44.19	56.18	0.65	67	2968	26652
	LSD (0.10)		2.49	3.65	1.28	0.39	1.49	2.50	2.26	0.02	2	165	3724
	C.V.		7.72	16.24	16.23	6.09	6.10	6.46	4.58	4.21	4	6	16

¹Days to maturity provided by company; differences in maturity rating methods may exist between companies.

* Indicates numbers not significantly different from the highest (or lowest for ADF and NDF) value in that column, i.e. within one LSD of the top performer.

Table 17. Three-Year Average Corn Silage Test Results (2011, 2012 & 2013) at the Southwest Virginia Site

Brand	Hybrid	DTM ¹	DM at Harvest	Yield at 35% DM	DM Yield	Crude Protein	ADF	NDF	NDF Digest.	NE _L	TDN	Milk2006	Milk2006
		--Days--	%	ton/acre	ton/acre	-----%				Mcal/lb	%	lb milk/ton	lb milk/acre
Seed Consultants	SCS 11HR63™	115	36.58	28.56 *	10.00 *	7.45 *	28.63 *	45.42 *	57.93 *	0.66 *	69 *	3056 *	29822 *
Seed Consultants	SCS 11HQ39™	112	34.82	26.24 *	9.18 *	7.45 *	29.32 *	46.93 *	58.08 *	0.67 *	69 *	3103 *	28406 *
Augusta	A5461	112	36.79	26.21 *	9.17 *	7.00	29.09 *	46.36 *	57.36 *	0.66 *	68 *	3021 *	27380 *
Seed Consultants	SC 11AQ72™	117	34.65	24.85	8.70	7.53 *	29.00 *	47.24 *	58.53 *	0.67 *	70 *	3120 *	27174 *
Seed Consultants	SCS 11HR21™	111	35.19	22.95	8.04	7.56 *	29.25 *	46.28 *	57.59 *	0.67 *	69 *	3077 *	24759
Dupont Pioneer	P1184AMX	111	36.34	21.71	7.60	7.65 *	27.57	44.05	57.27 *	0.67 *	69 *	3065 *	23319
	Site Average		35.73	25.09	8.78	7.44	28.81	46.05	57.79	0.67	69	3074	26810
	LSD (0.10)		2.18	2.97	1.04	0.30	1.40	2.47	1.70	0.02	2	126	3321
	C.V.		8.68	16.86	16.85	5.64	6.92	7.63	4.20	3.89	4	6	18

¹Days to maturity provided by company; differences in maturity rating methods may exist between companies.

* Indicates numbers not significantly different from the highest (or lowest for ADF and NDF) value in that column, i.e. within one LSD of the top performer.

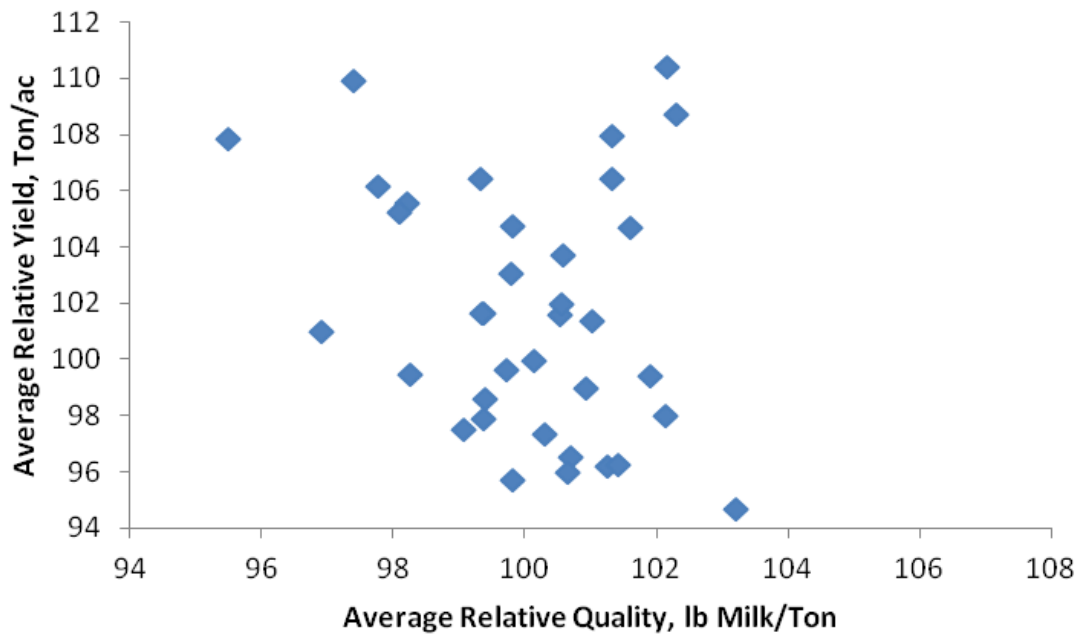
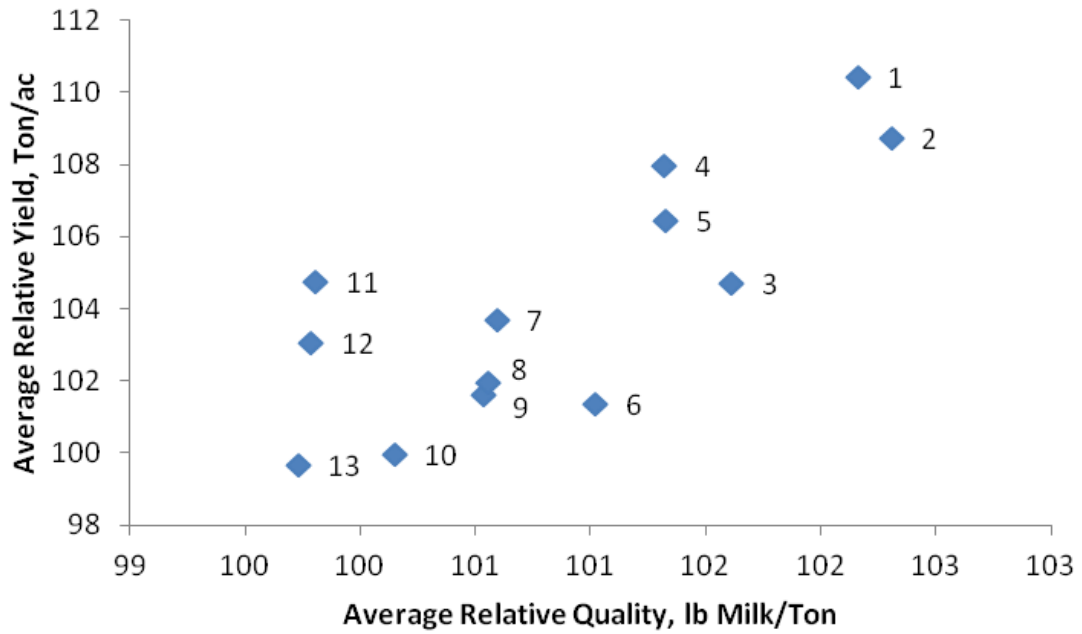


Figure 1. Average relative yield versus quality across sites, 2013



Point	Brand	Hybrid
1	Channel	218-73VT3PRIB Brand
2	T.A. Seeds	TA765-30
3	Seed Consultants	SC 11AQ72
4	Dupont Pioneer	P2088YXR
5	RPM	743HXR
6	Dyna-Gro	D59HR50
7	Seed Consultants	SCS 1131AM-R
8	Dupont Pioneer	P1498CHR
9	Dyna-Gro	D55GT73
10	RPM	688AMX
11	Seed Consultants	SCS 1184AM-R
12	RPM	765YHR
13	Dupont Pioneer	P1319HR

Figure 2. High Yielding and High Quality Hybrids in at Least 3 Site/Year Combinations in 2013