

Floor Plan of School Kitchen with Monitor Locations Designated

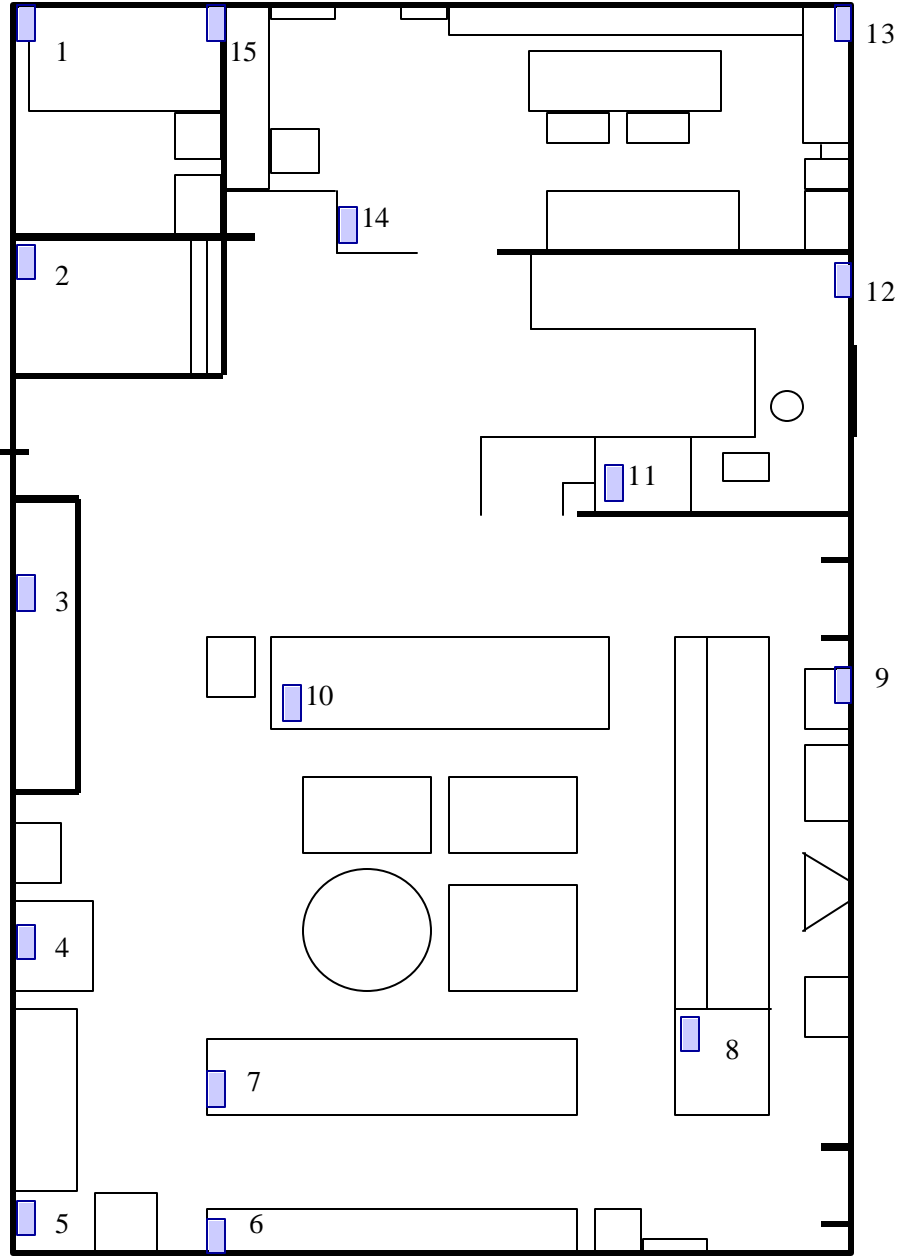


Figure 1. Fifteen sticky traps were placed in this kitchen to effectively monitor the entire area. The traps are located in areas where the initial inspection identified an active infestation, pest evidence, or conditions conducive to pests. These monitors will be checked and changed every month. New monitors will be numbered and placed in the same locations. Pests found in the monitors will be recorded on this floor plan.